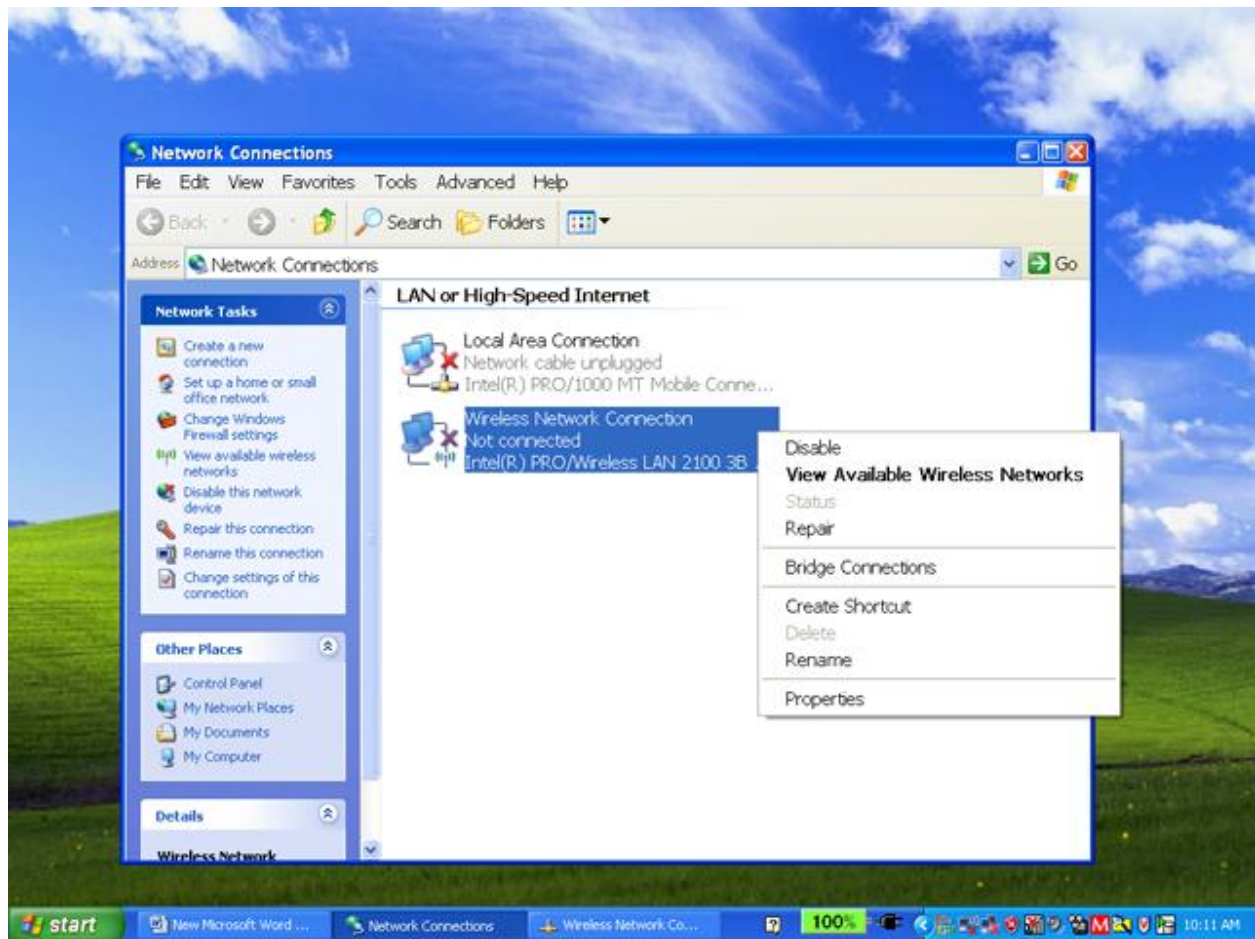


La Salle Wireless Instructions

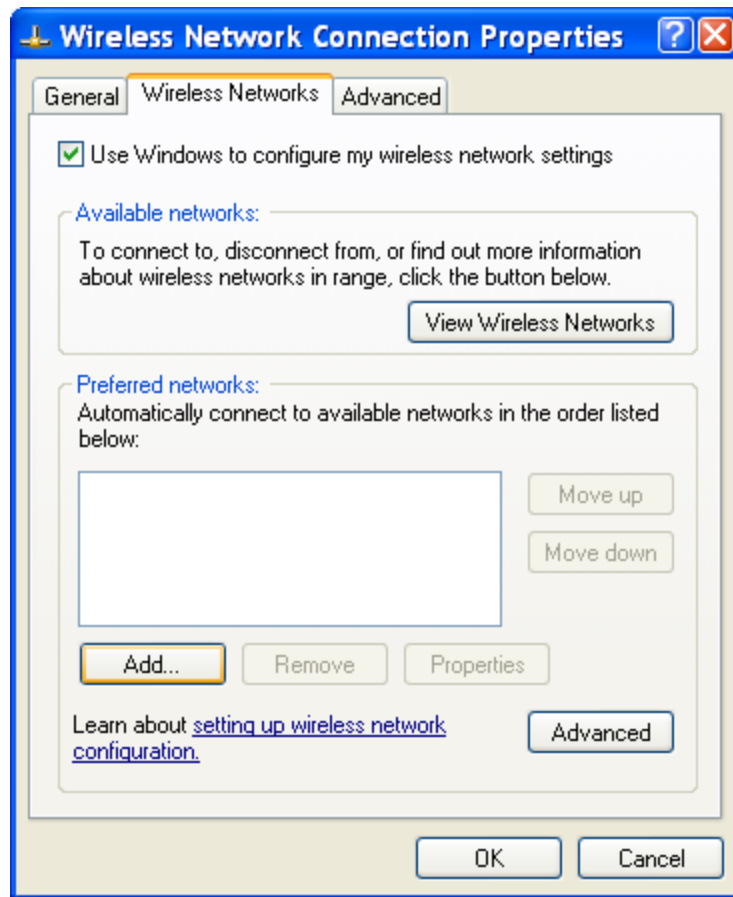
Windows XP



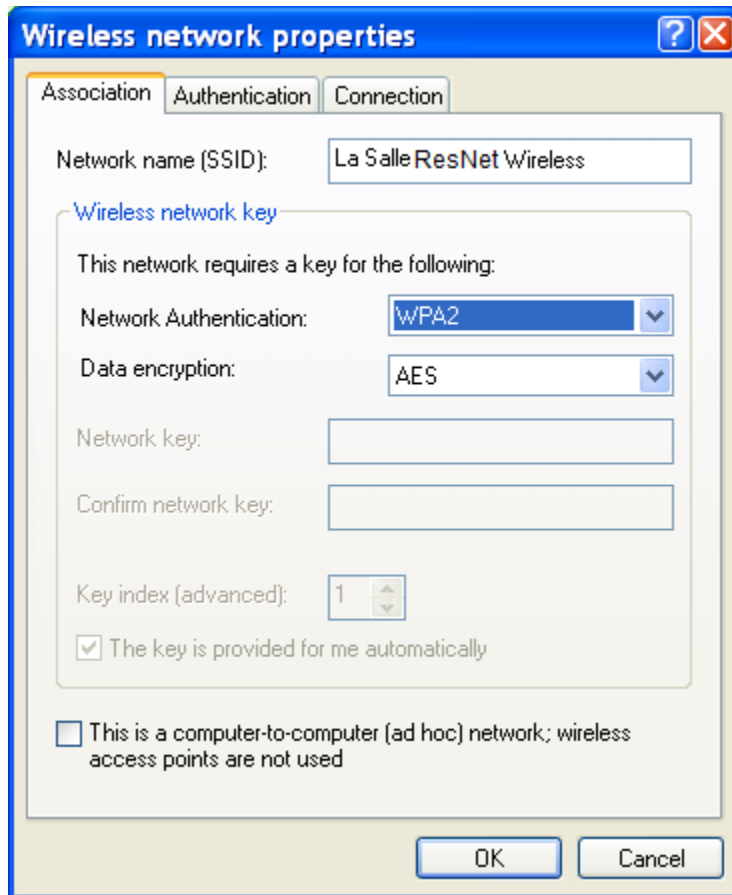
Begin by right clicking the wireless icon in your system tray and selecting
“Open Network Connections”



Then right-click on the Wireless Network Connection and select Properties.



Click on the Wireless Networks tab
Select Add... under the Preferred networks section

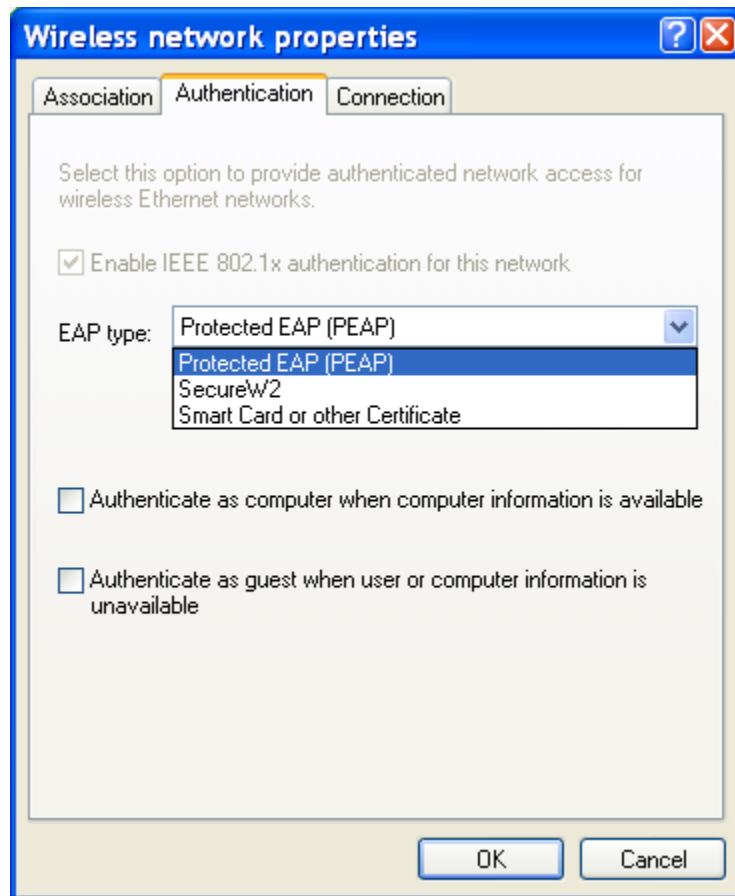


Enter “La Salle ResNet Wireless” in the Network name (SSID) field

Select WPA2 for Network Authenticaion

Select AES for Data Encryption

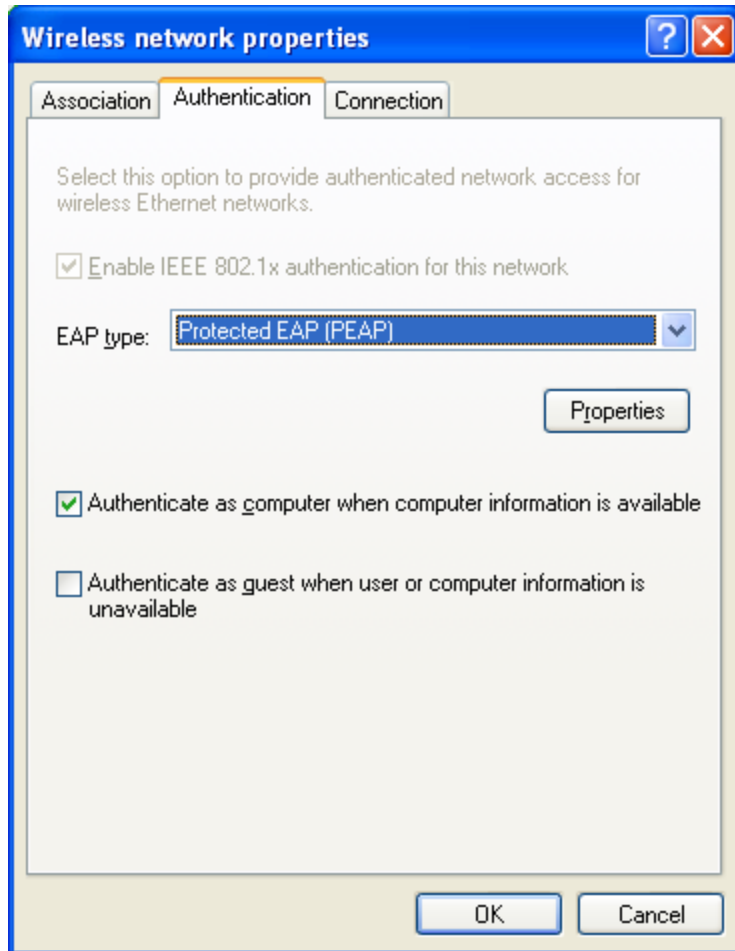
Note: If you do not see these options, you must update Windows XP to at least SP2. This update is available for free on update.microsoft.com



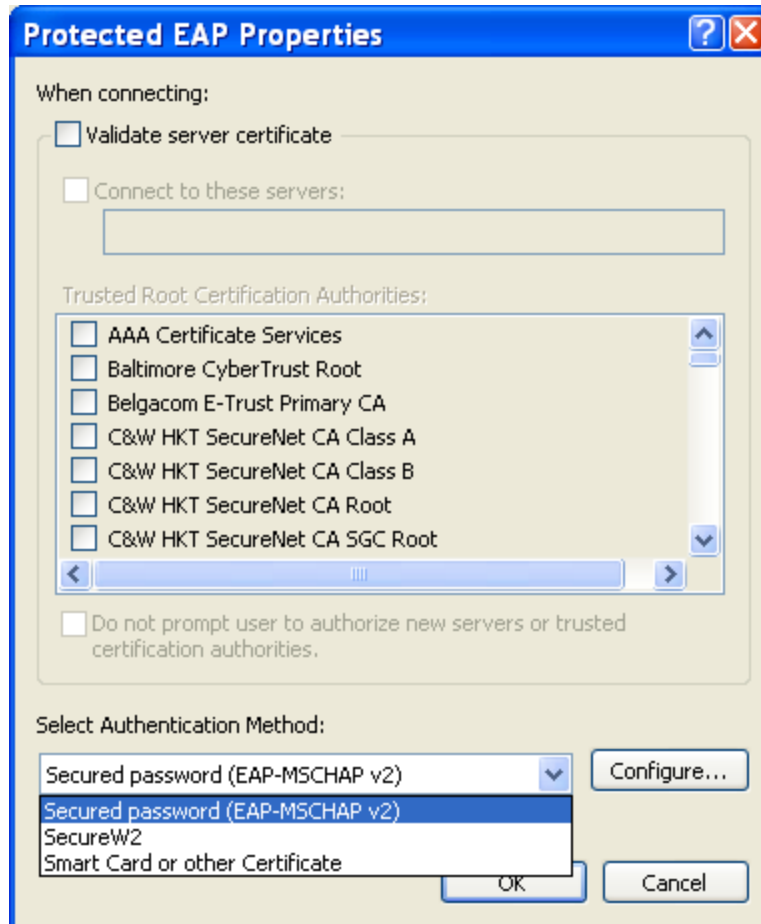
Next, click on the Authentication tab

Select Protected EAP (PEAP) from the dropdown list for EAP type

Uncheck "Authenticate as computer when information is available"



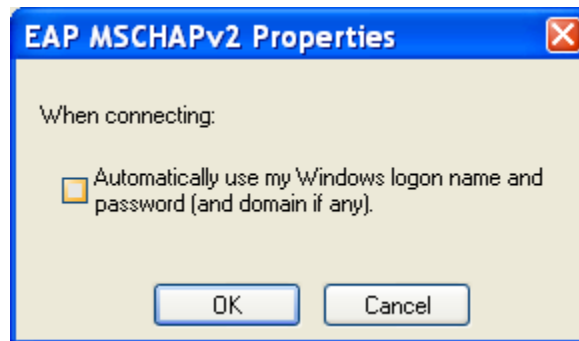
Click Properties



Uncheck "Validate Server Certificate"

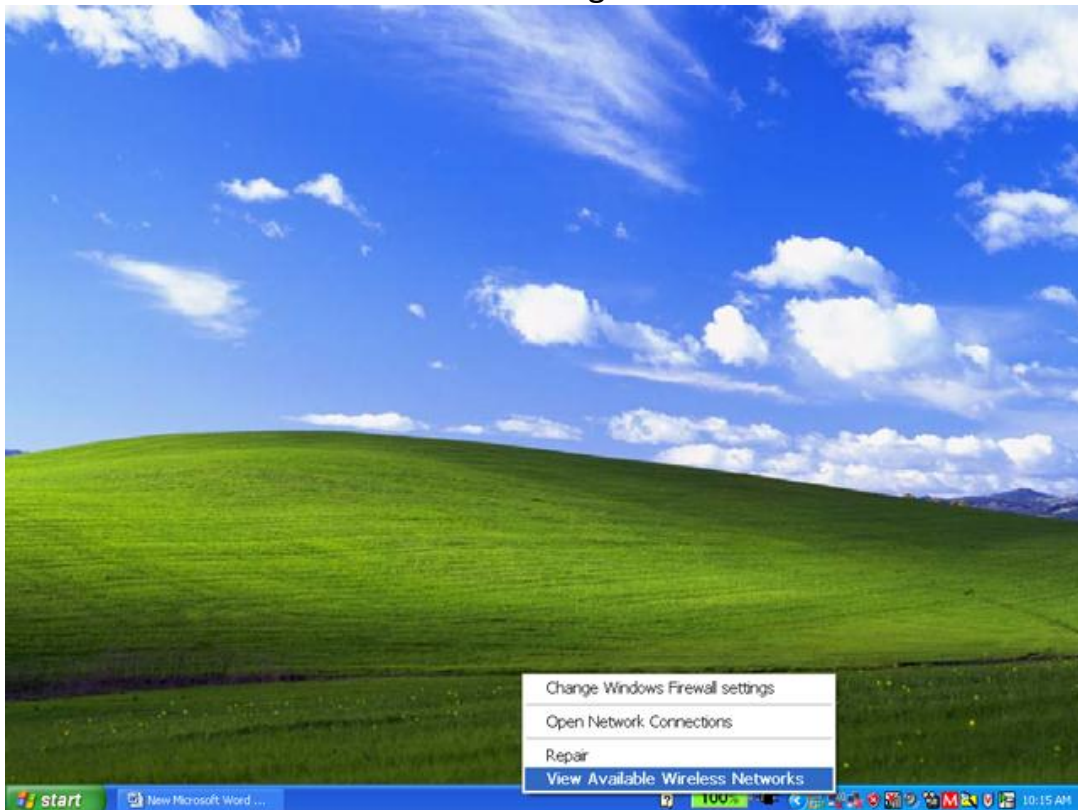
EAP-MSCHAP v2 should be the default Authentication Method, if it is not, select it

Then click Configure...

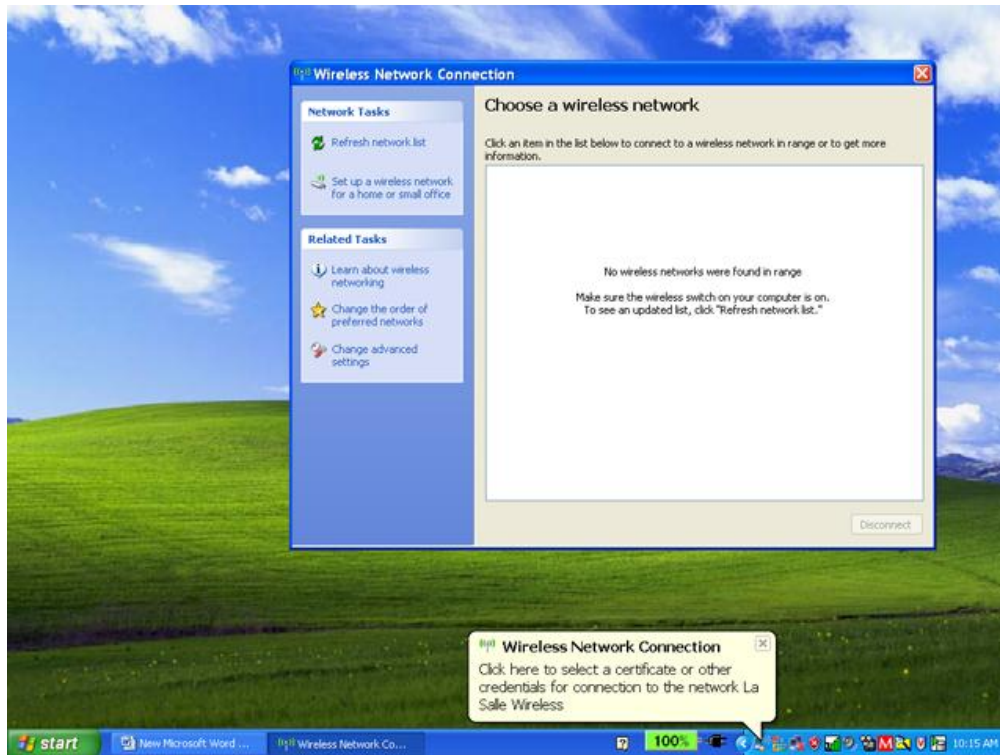


Uncheck the box and click ok

Click OK on the remaining windows as well.



Right click on the wireless tray icon again
Next click "View Available Wireless Networks"
Select "La Salle ResNet Wireless" and click "connect"



A balloon will appear and ask for credentials. Click it.



Enter your **La Salle Network** username and password. **LUNA** should be entered for the **Logon domain**.

If you are authenticated successfully, you should now be connected to the wireless network and you should follow the procedure to login through Cisco NAC Agent. The next time you connect to the wireless network, your computer should automatically reconnect using the username and password previously supplied.