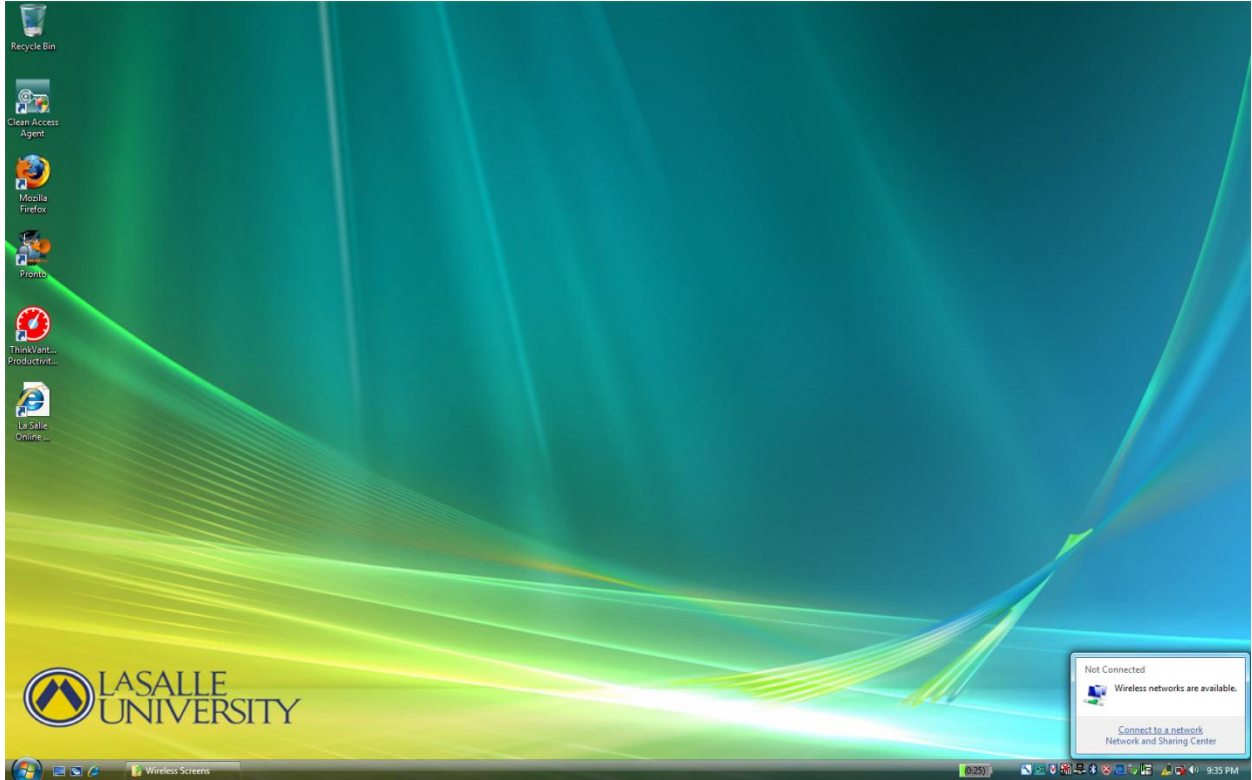
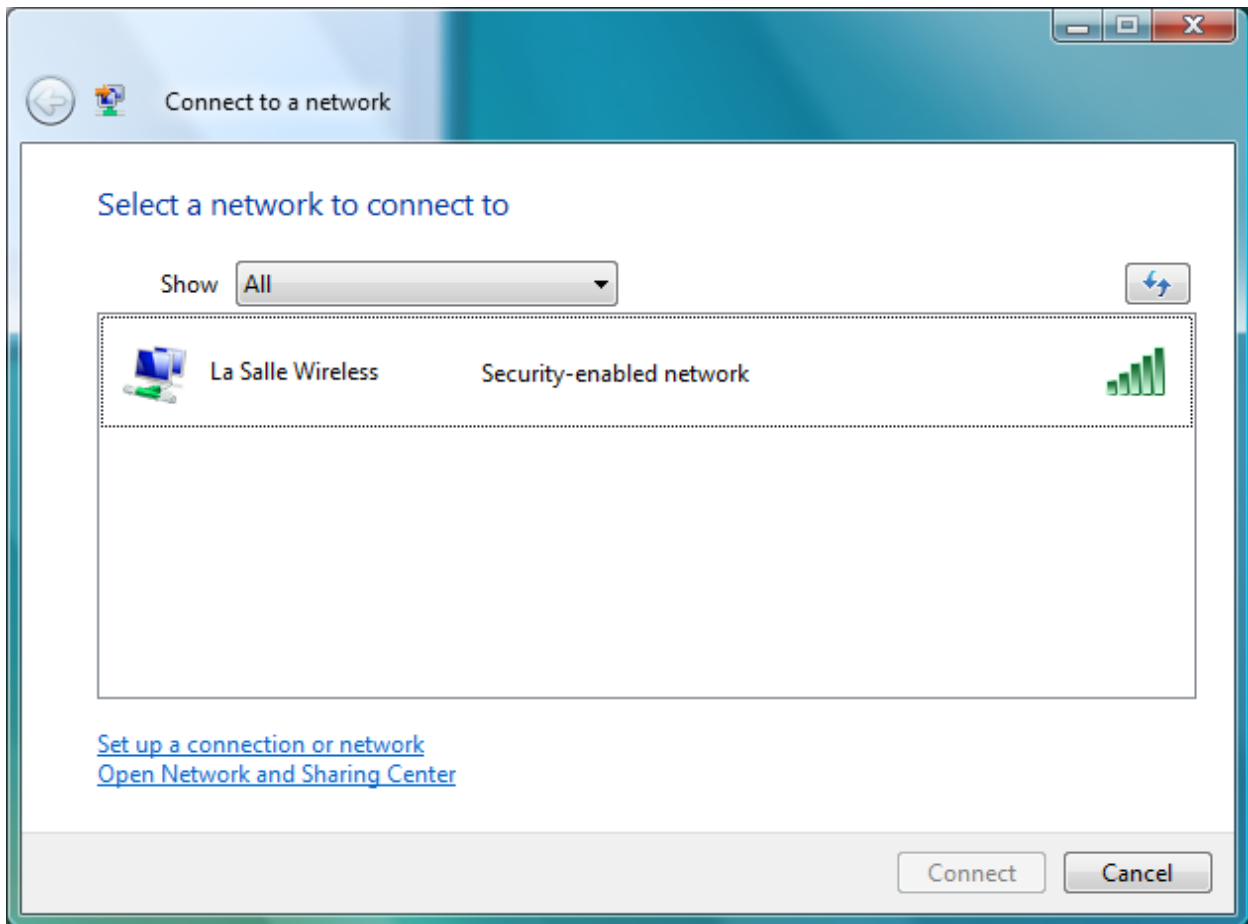


Windows Vista



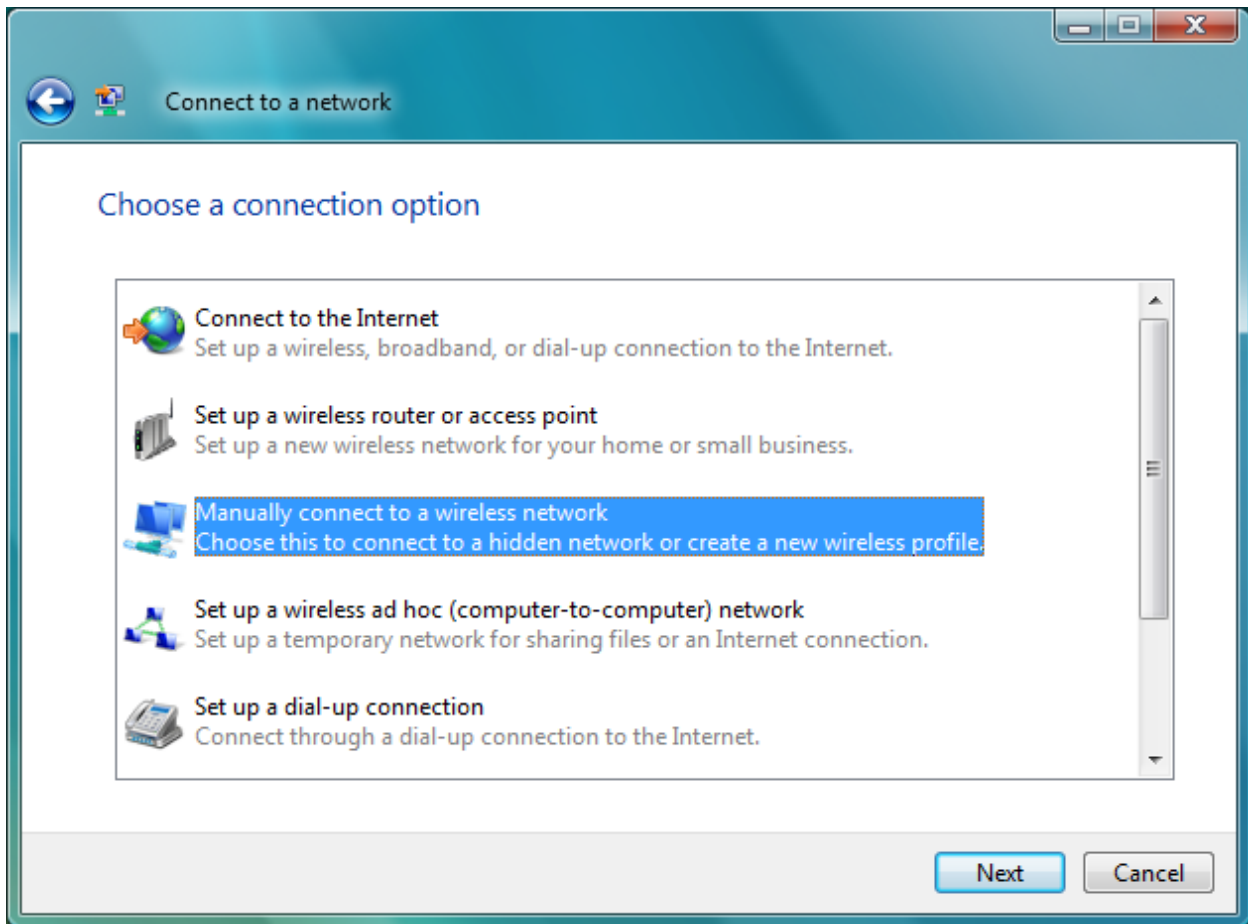
Click on the Wireless Network icon in the system tray

Click "Connect to a Network"

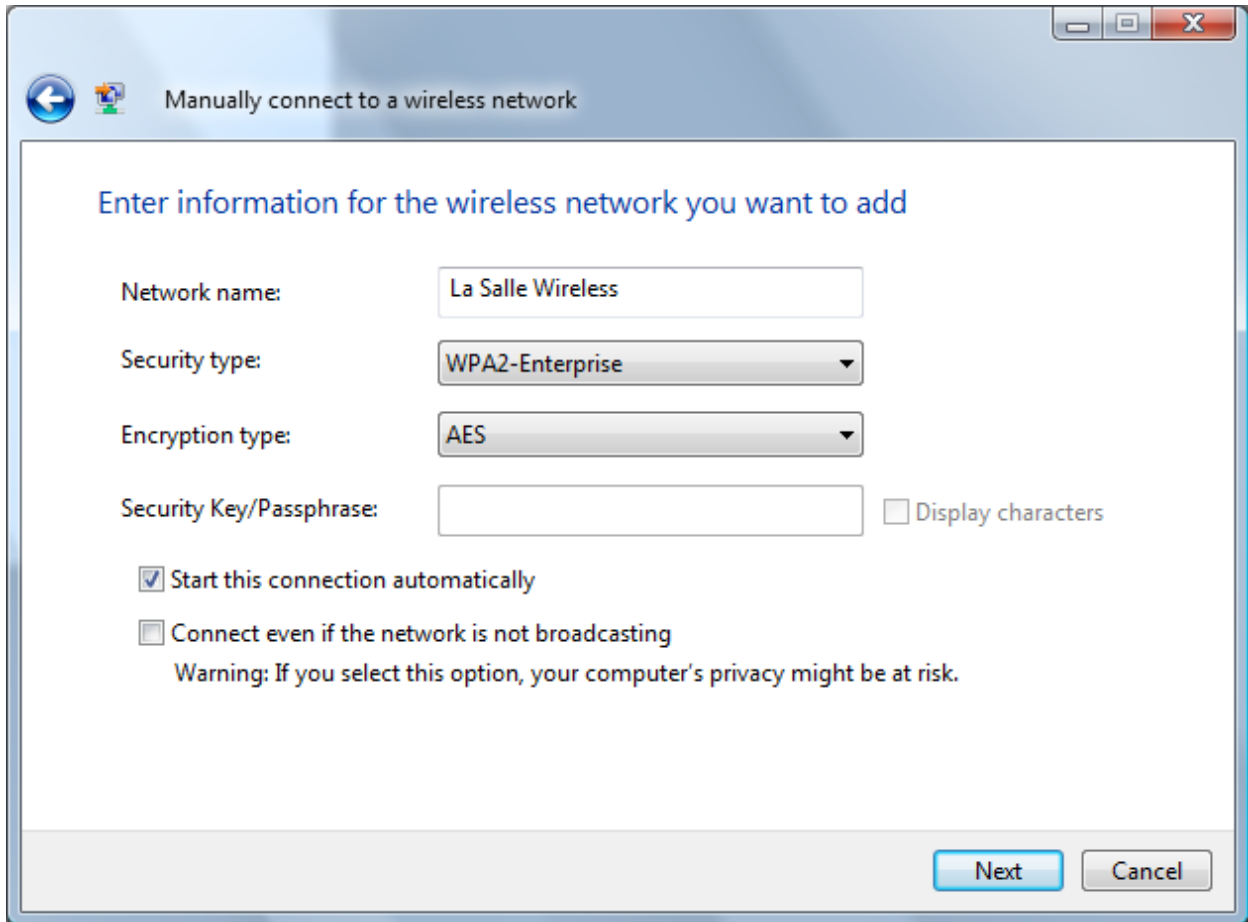


Click “Set up a connection or network”

DO NOT select La Salle Wireless yet!



Select "Manually connect to a wireless network" and click Next



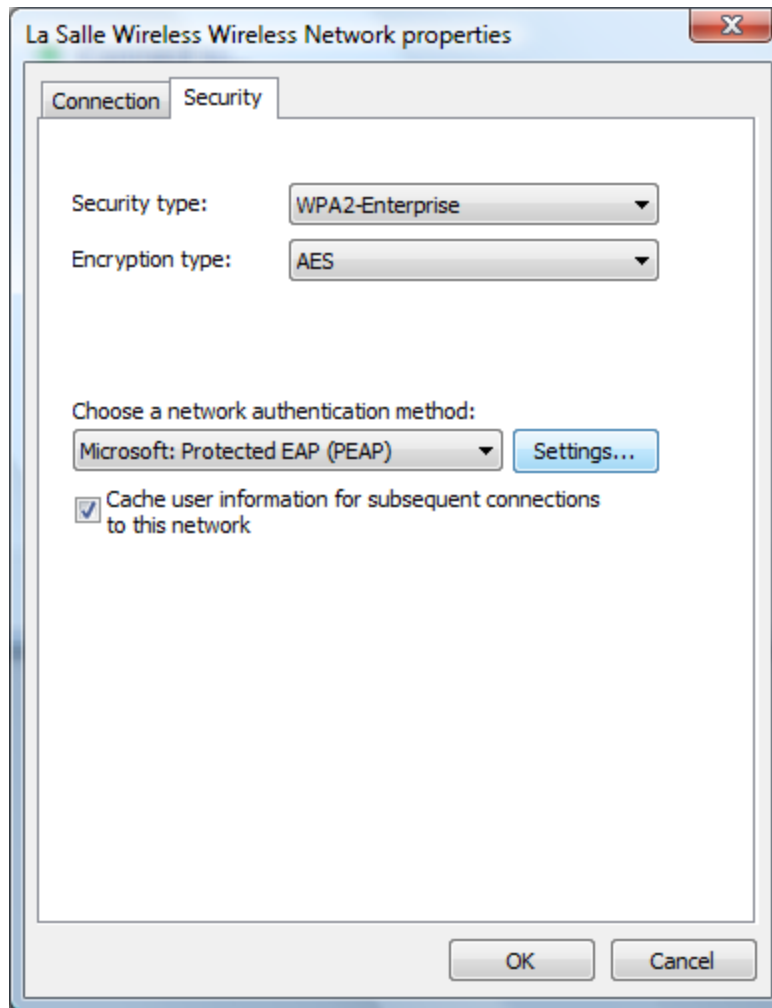
Type "La Salle Wireless" for the network name

Select WPA2 Enterprise for the Security type

Select AES for Encryption type

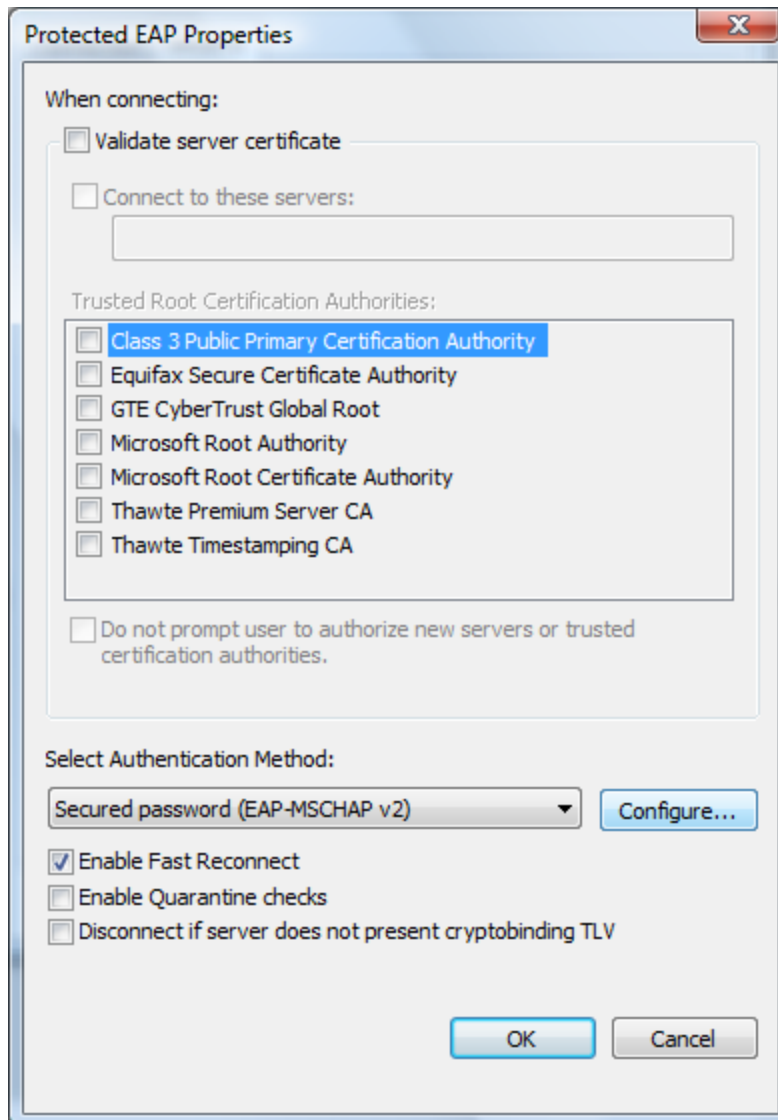
Click Next

Click "Change Network Settings" when presented with the next menu



Under the Security tab, make sure that PEAP is the authentication method

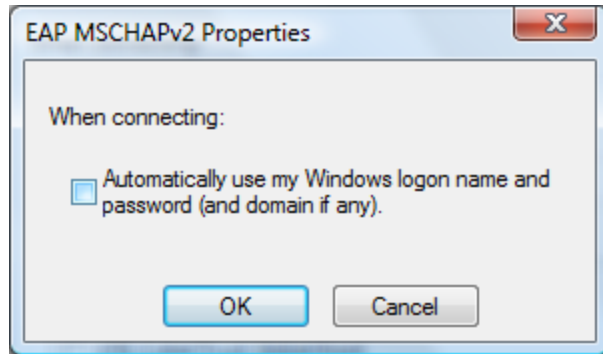
Click Settings



Uncheck “Validate Server Certificate at the top of the window.

Make sure that EAP-MSCHAP v2 is the Authentication Method

Click “Configure...”



Uncheck the box in the EAP MSCHAPv2 configuration



Click OK on any open windows

Click on the bubble asking for additional information



Your user name is your My.Lasalle Username

The password is the network password.

Type "LUNA" in the Logon domain box

Click OK