

La Salle University Organizational Chart

as of August 1, 2019



Table of Contents

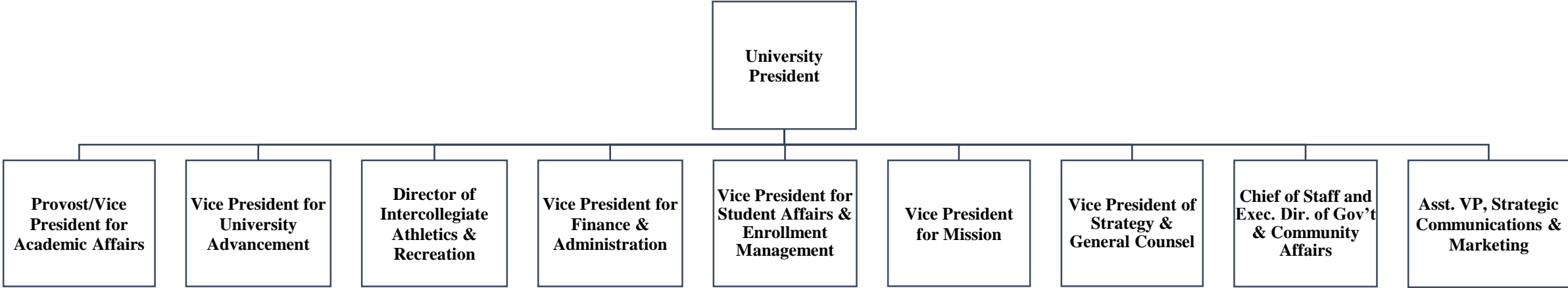
	Slide
Office of the President	3
Academic Affairs	9
Advancement	26
Athletics	28
Finance & Administration	31
Student Affairs & Enrollment Management	39

Office of the President

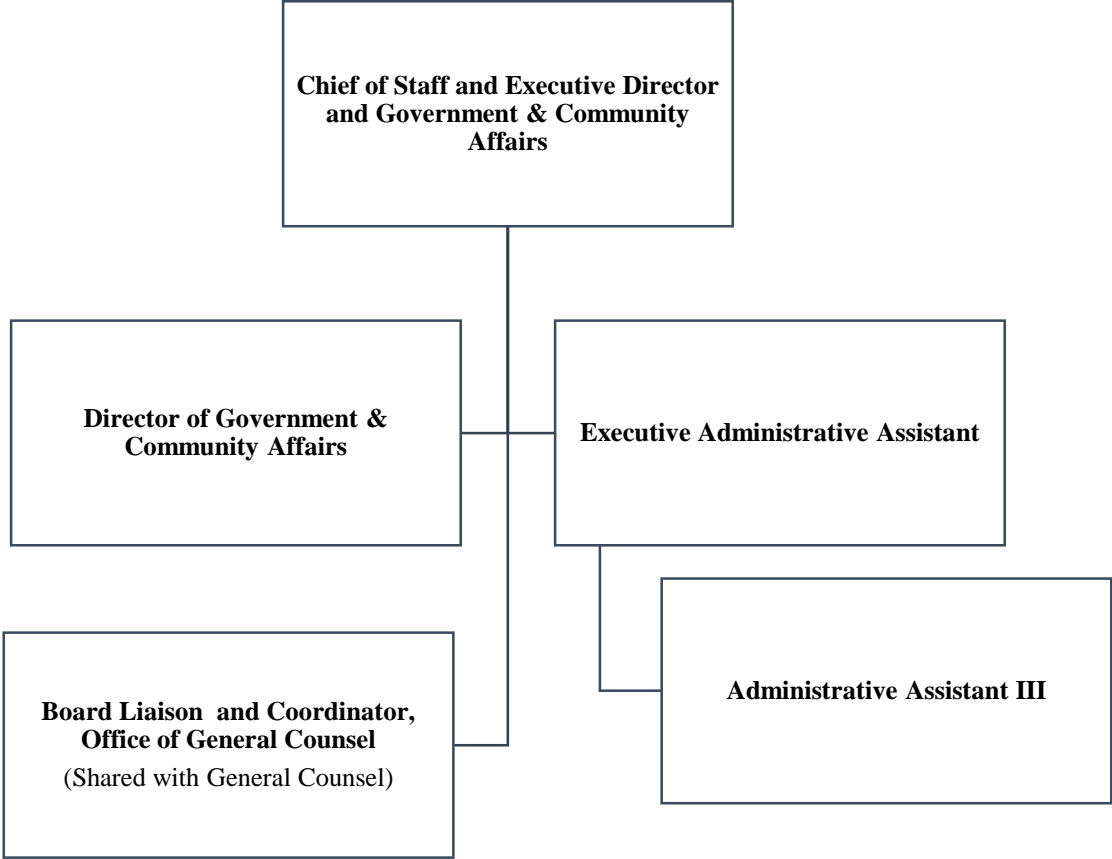
Organizational Chart



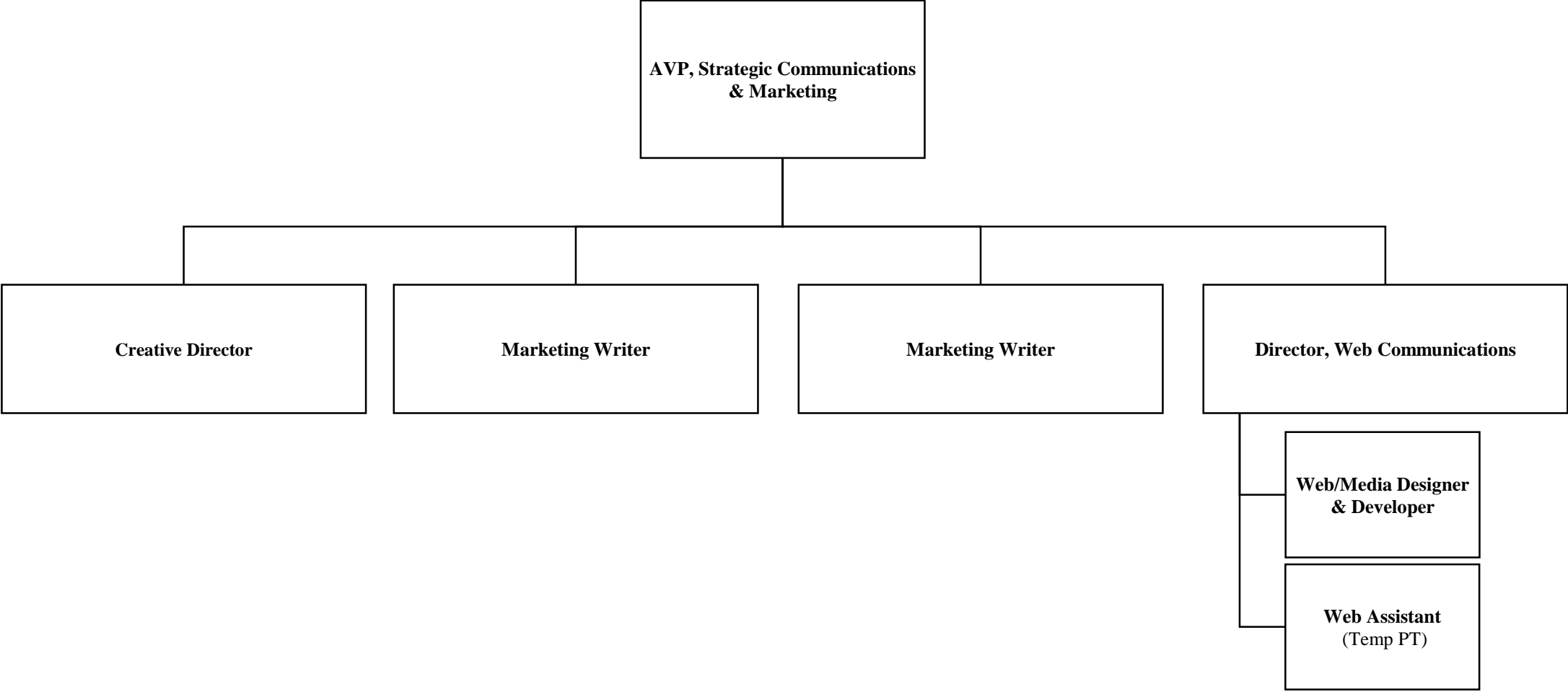
Office of the President / Executive Cabinet
August 1, 2019



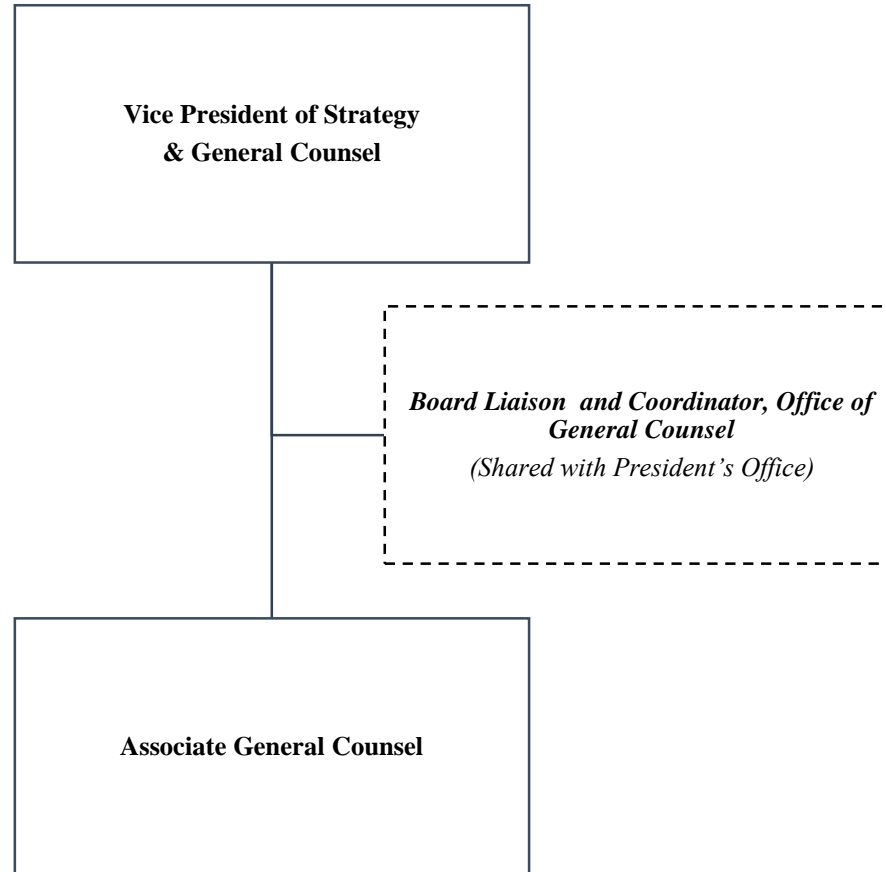
Office of the President
August 1, 2019



Marketing & Communications
August 1, 2019

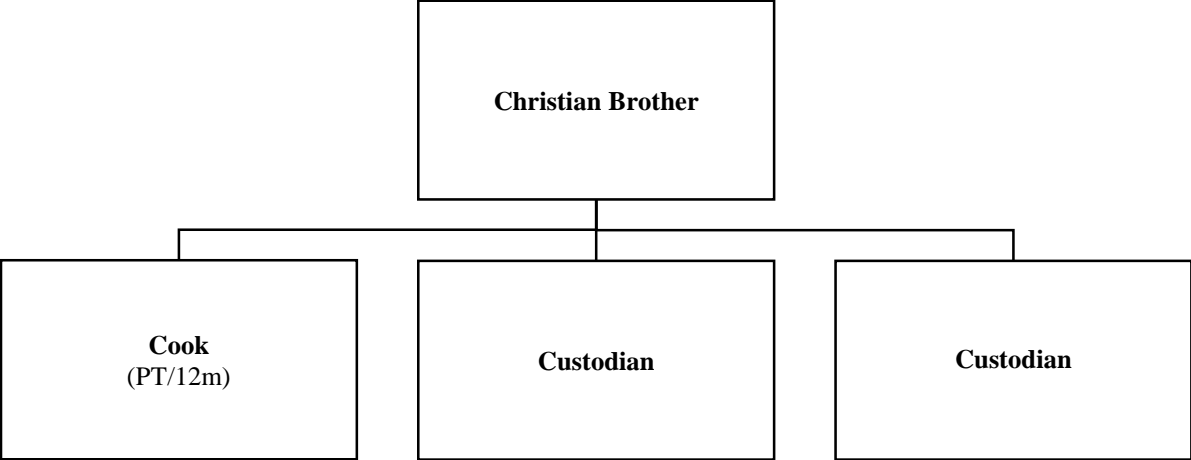


Office of General Counsel
August 1, 2019

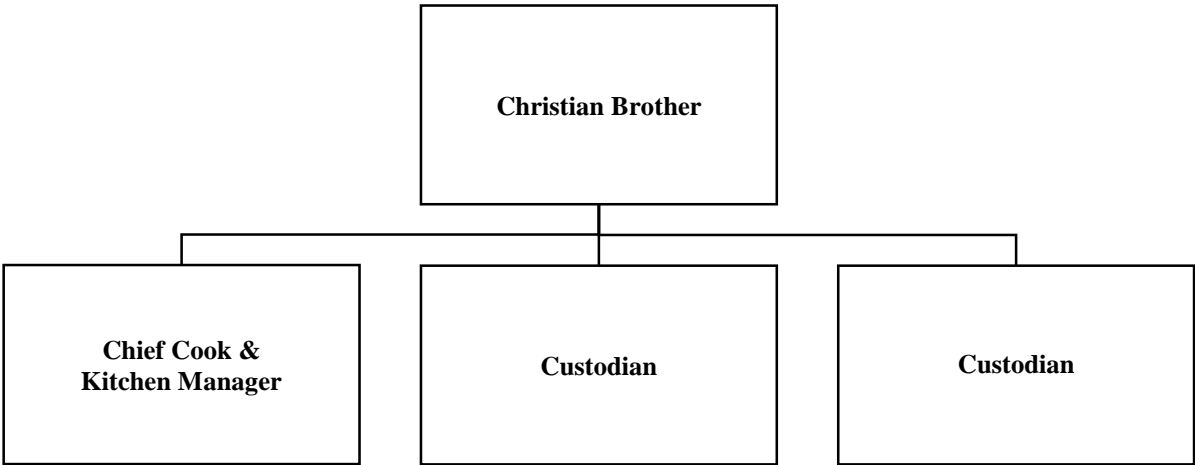


Christian Brothers Residences
August 1, 2019

Anselm Hall



De La Salle Community

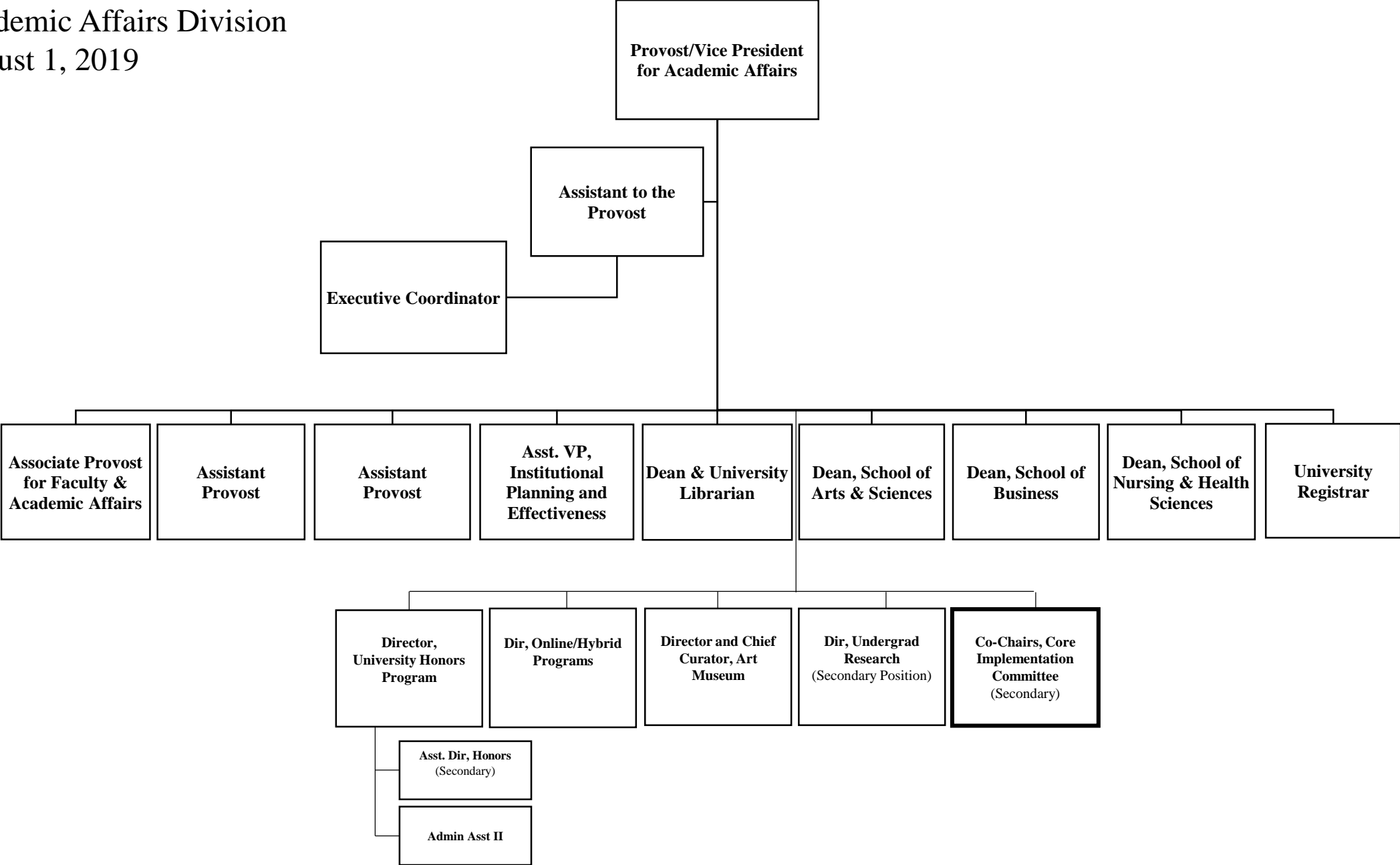


Academic Affairs Division

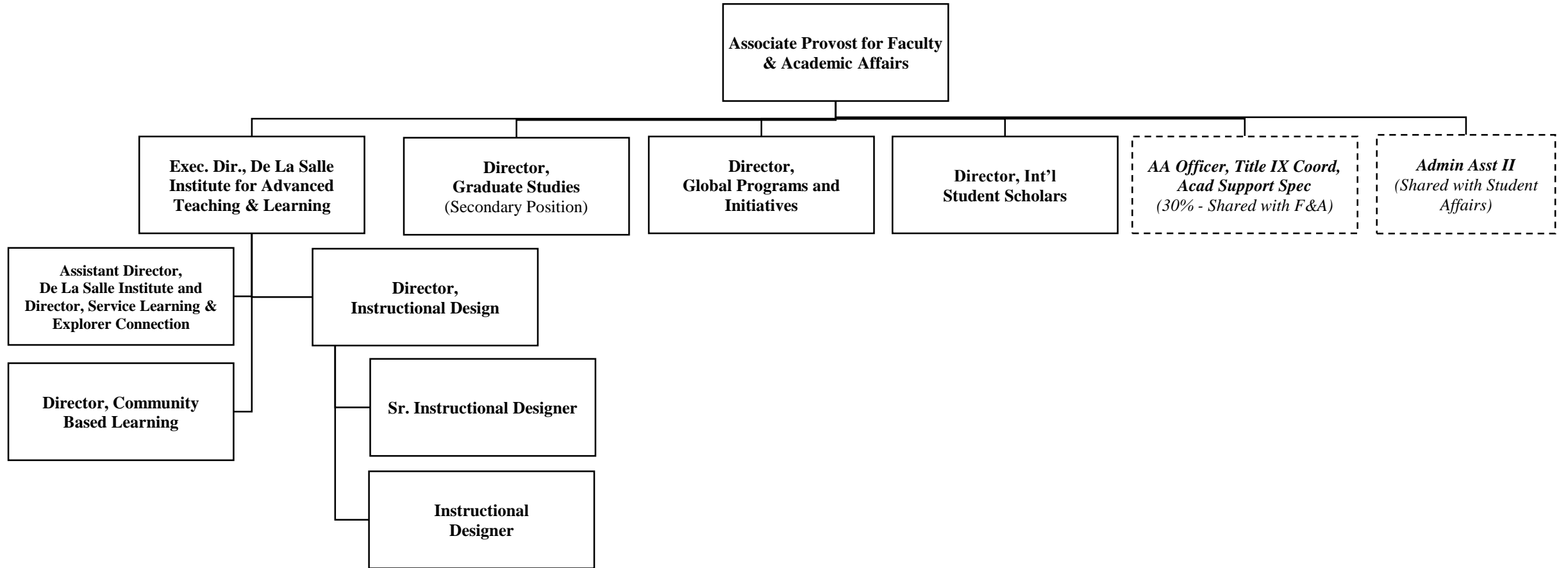
Organizational Chart



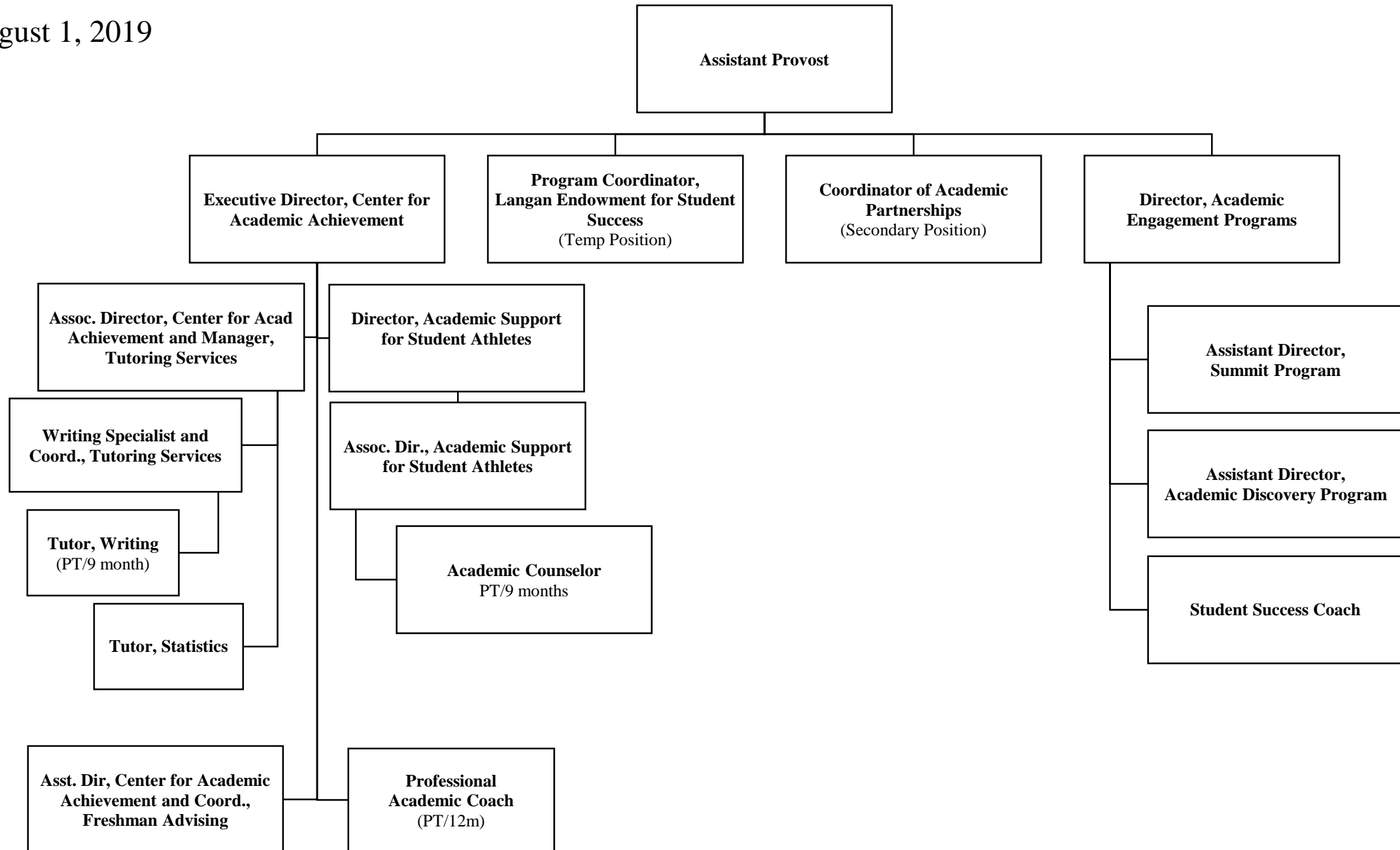
Academic Affairs Division
 August 1, 2019



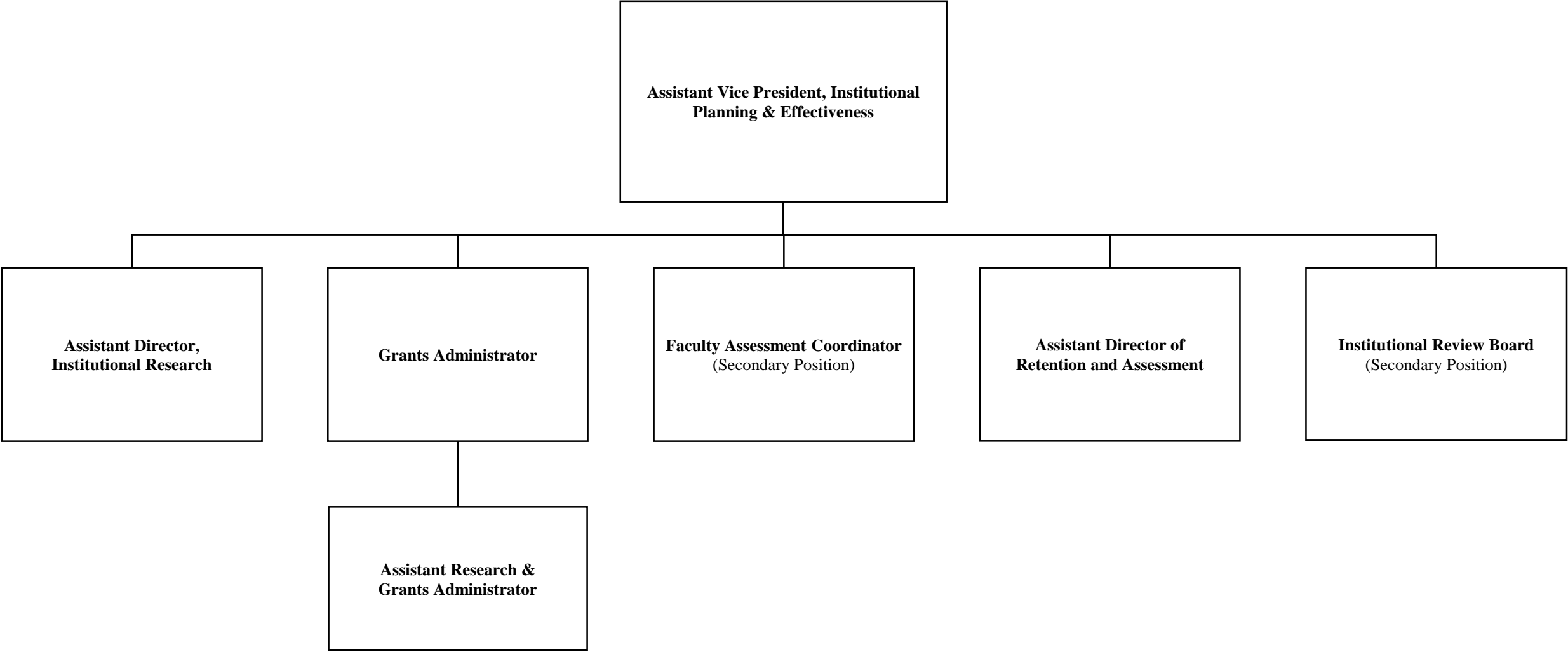
August 1, 2019



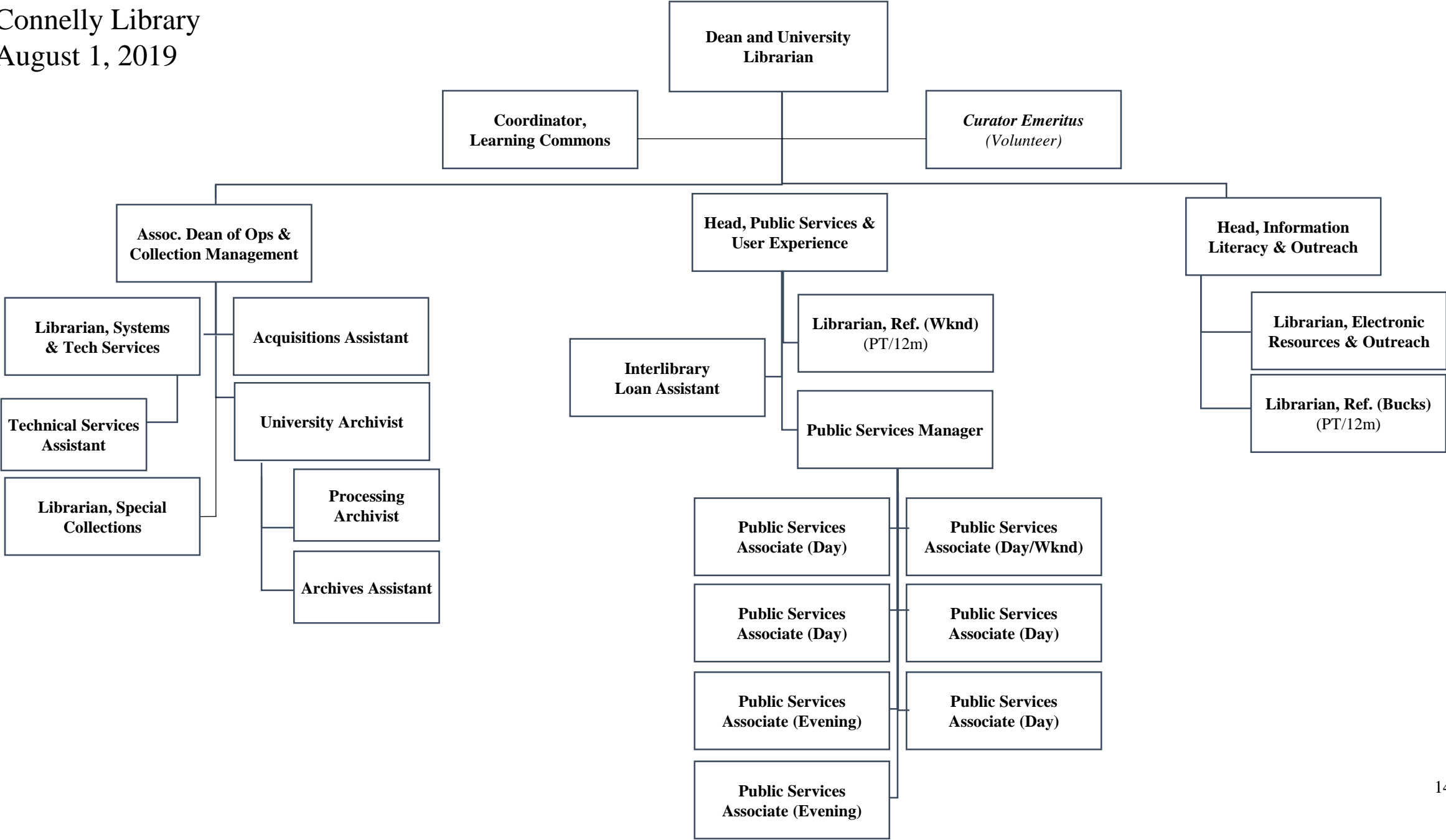
August 1, 2019



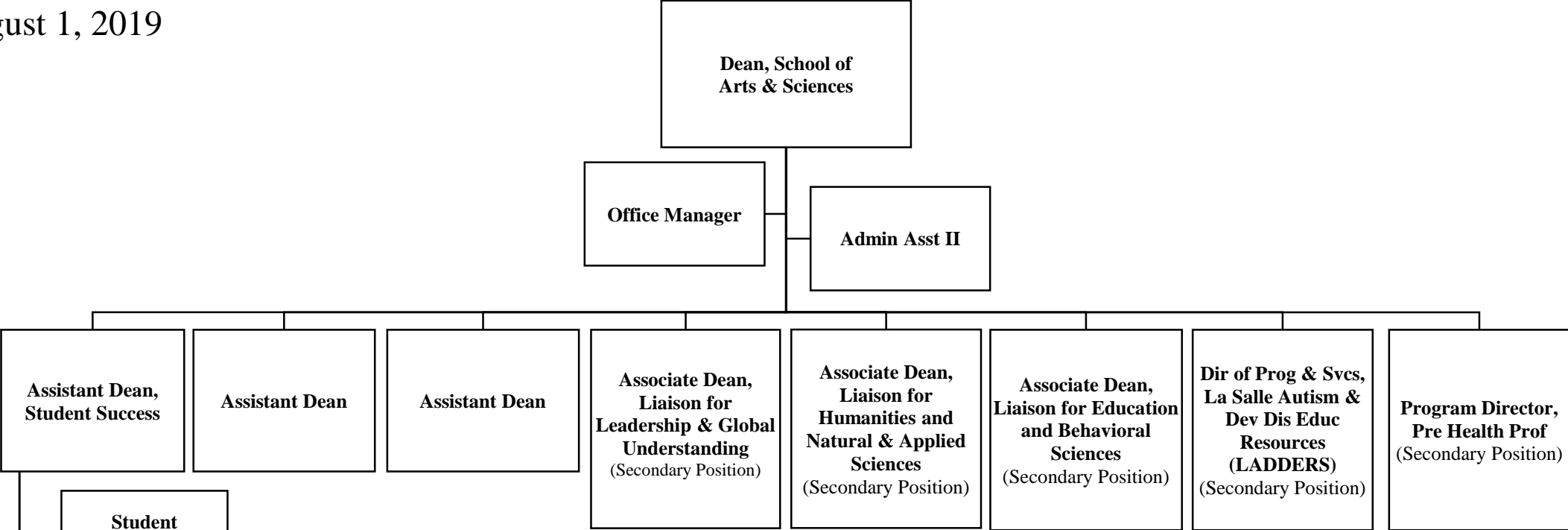
Institutional Planning & Effectiveness
August 1, 2019



Connelly Library
 August 1, 2019



School of Arts & Sciences
 August 1, 2019



College of Leadership & Global Understanding (Chairs report to Dean):

- Communication
- Economics
- Global Lang, Lit & Perspectives
- History
- Political Science
- Soc & Crim Justice

College of Humanities and Art and College of Natural and Applied Sciences (Chairs report to Dean):

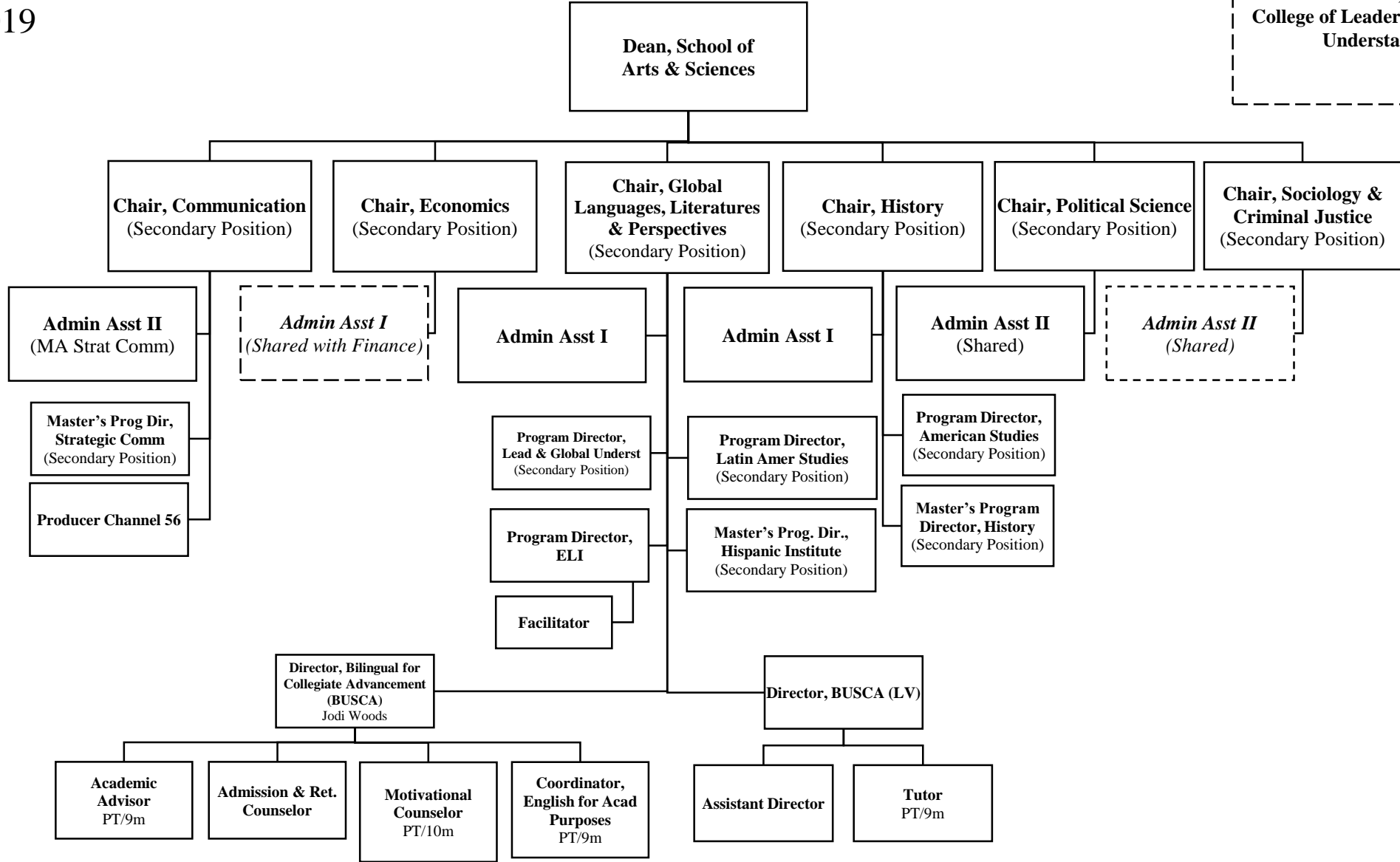
- Art
- English
- Philosophy
- Rel & Theology
- Biology
- Chem & Biochem
- Integrated Science
- Business & Technology (ISBT)
- Math & Comp Sci

College of Education and Behavioral Sciences (Chairs report to Dean):

- Education
- Psychology
- Social Work

Leadership & Global Understanding
 August 1, 2019

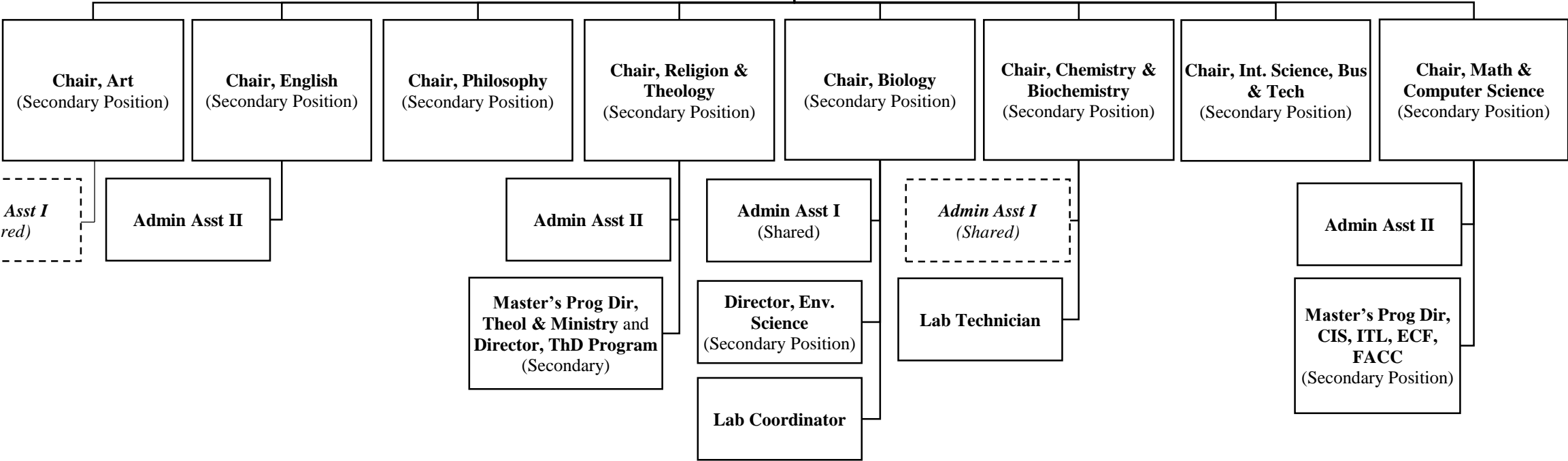
Associate Dean, Liaison for
 College of Leadership & Global
 Understanding



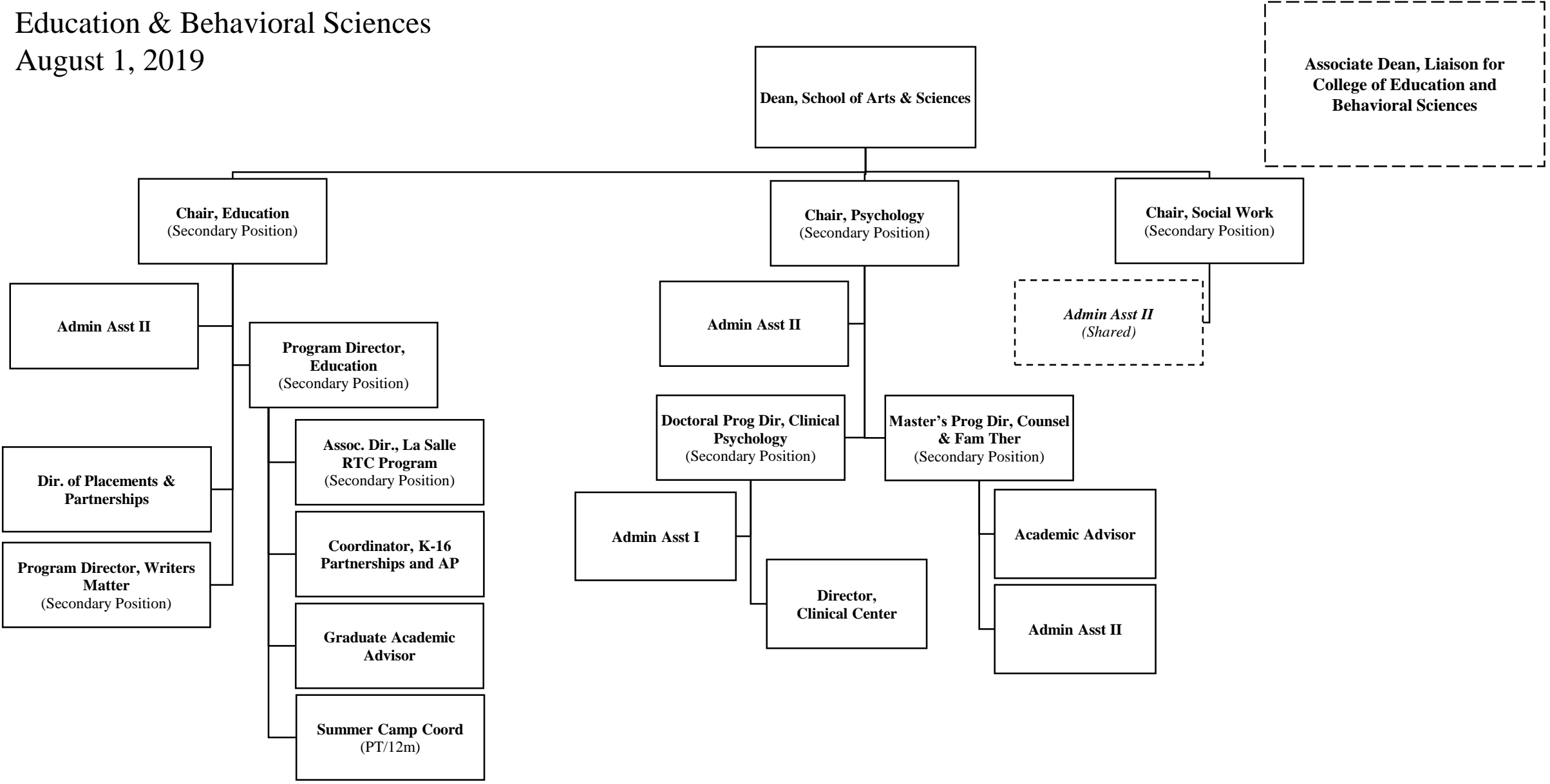
Humanities and Natural & Applied Sciences
 August 1, 2019

**Associate Dean, Liaison for
 College of Humanities and Art
 and College of Natural and
 Applied Sciences**

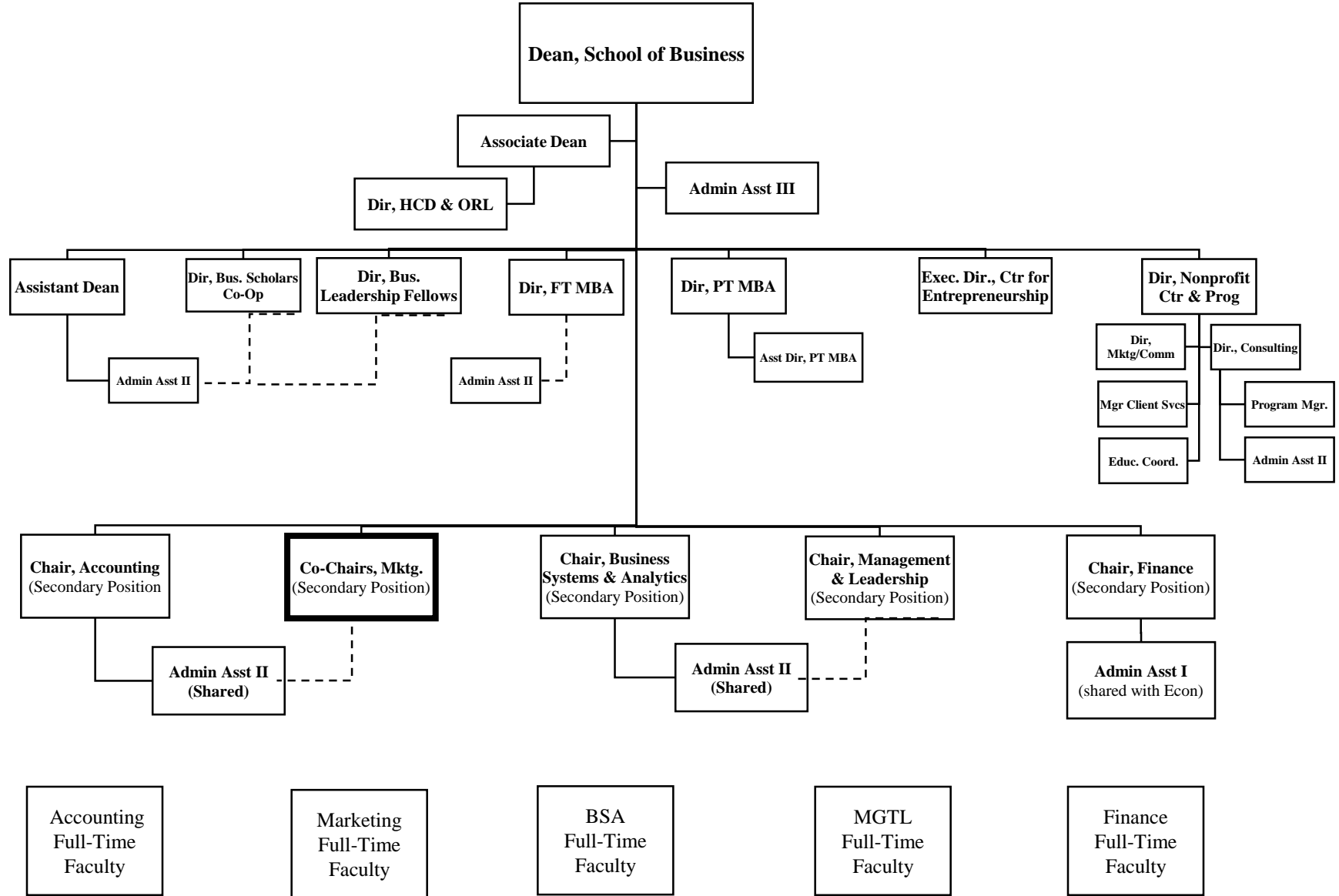
Dean, School of Arts & Sciences



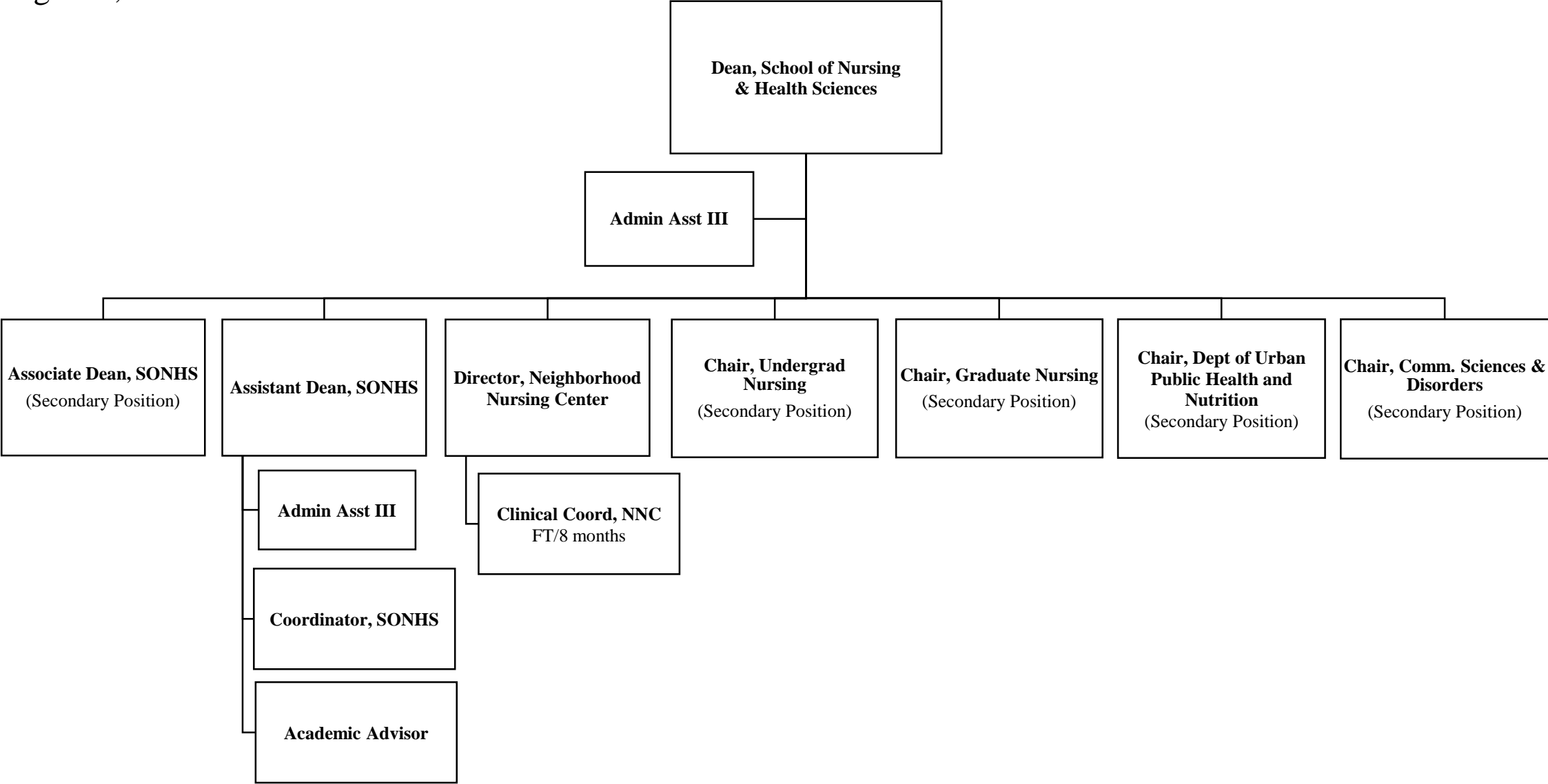
Education & Behavioral Sciences
 August 1, 2019

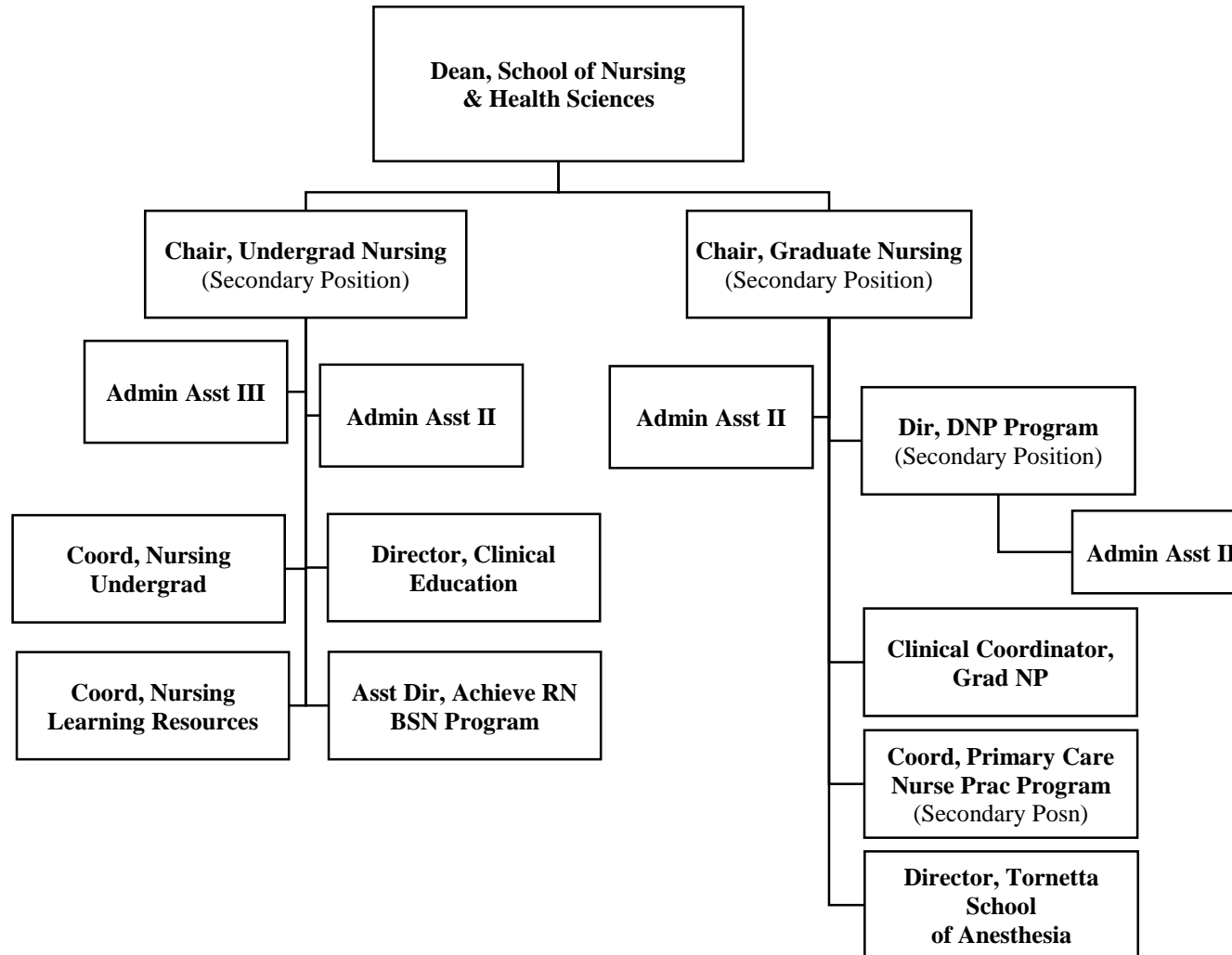


School of Business
August 1, 2019

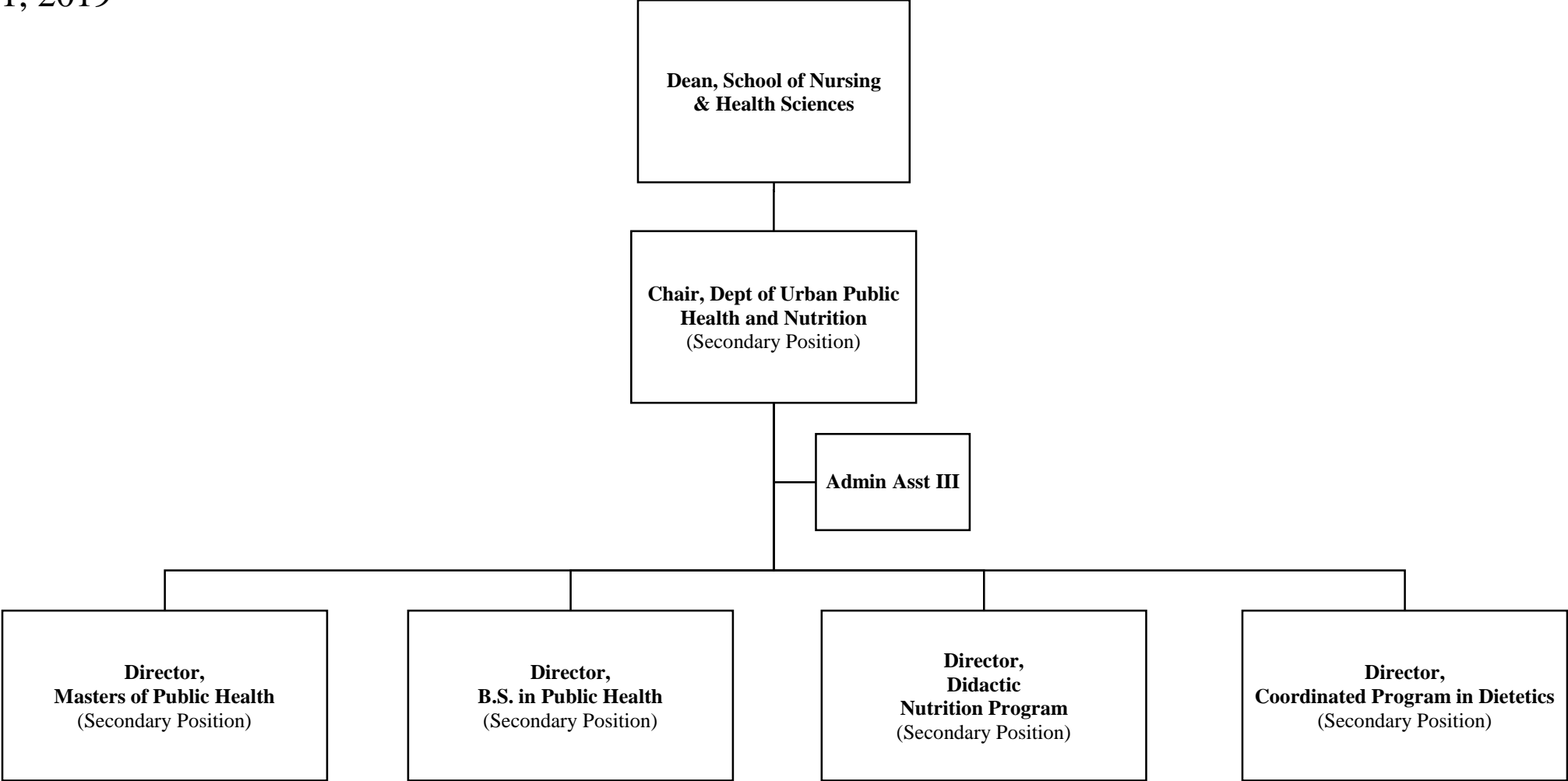


Dean's Office, School of Nursing & Health Sciences
August 1, 2019

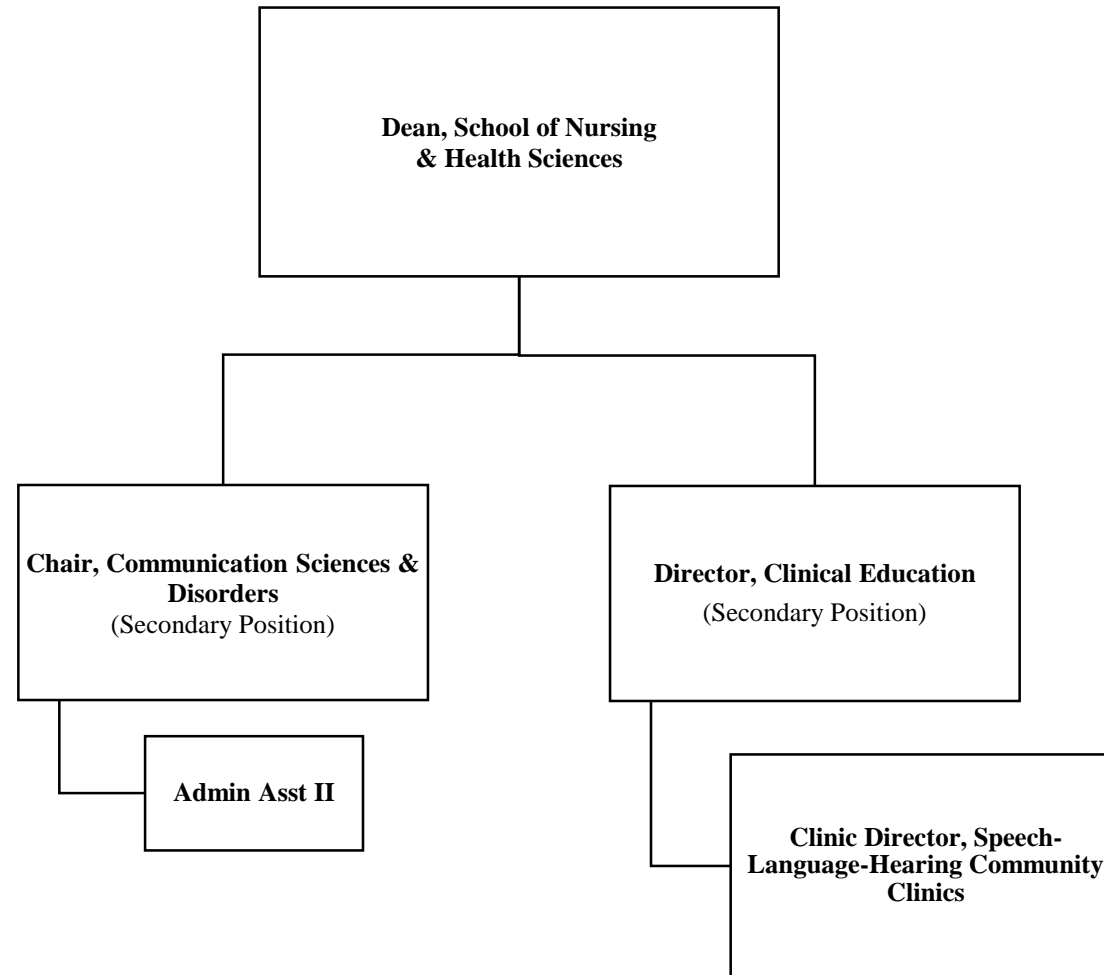




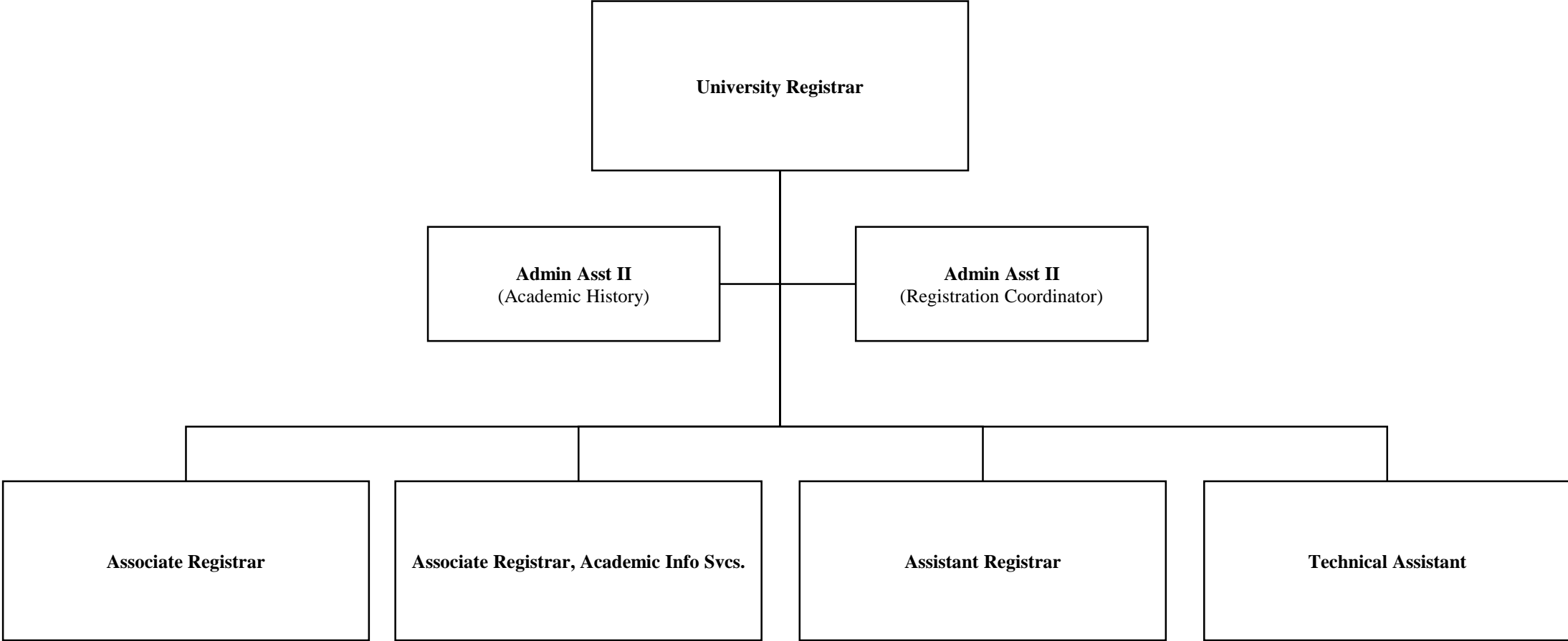
Public Health and Nutrition
August 1, 2019



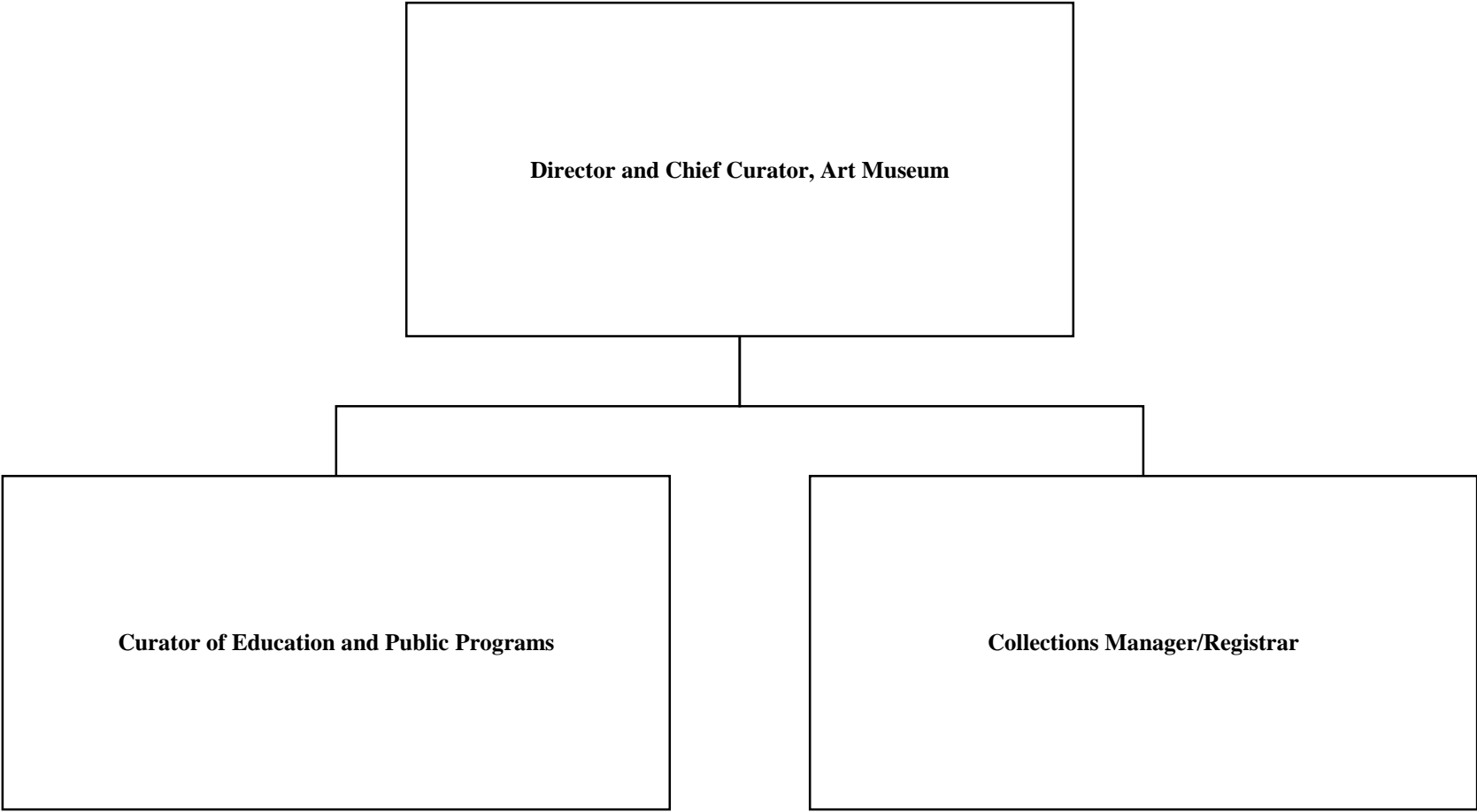
Communication Sciences and Disorders
August 1, 2019



University Registrar
August 1, 2019



Art Museum
August 1, 2019

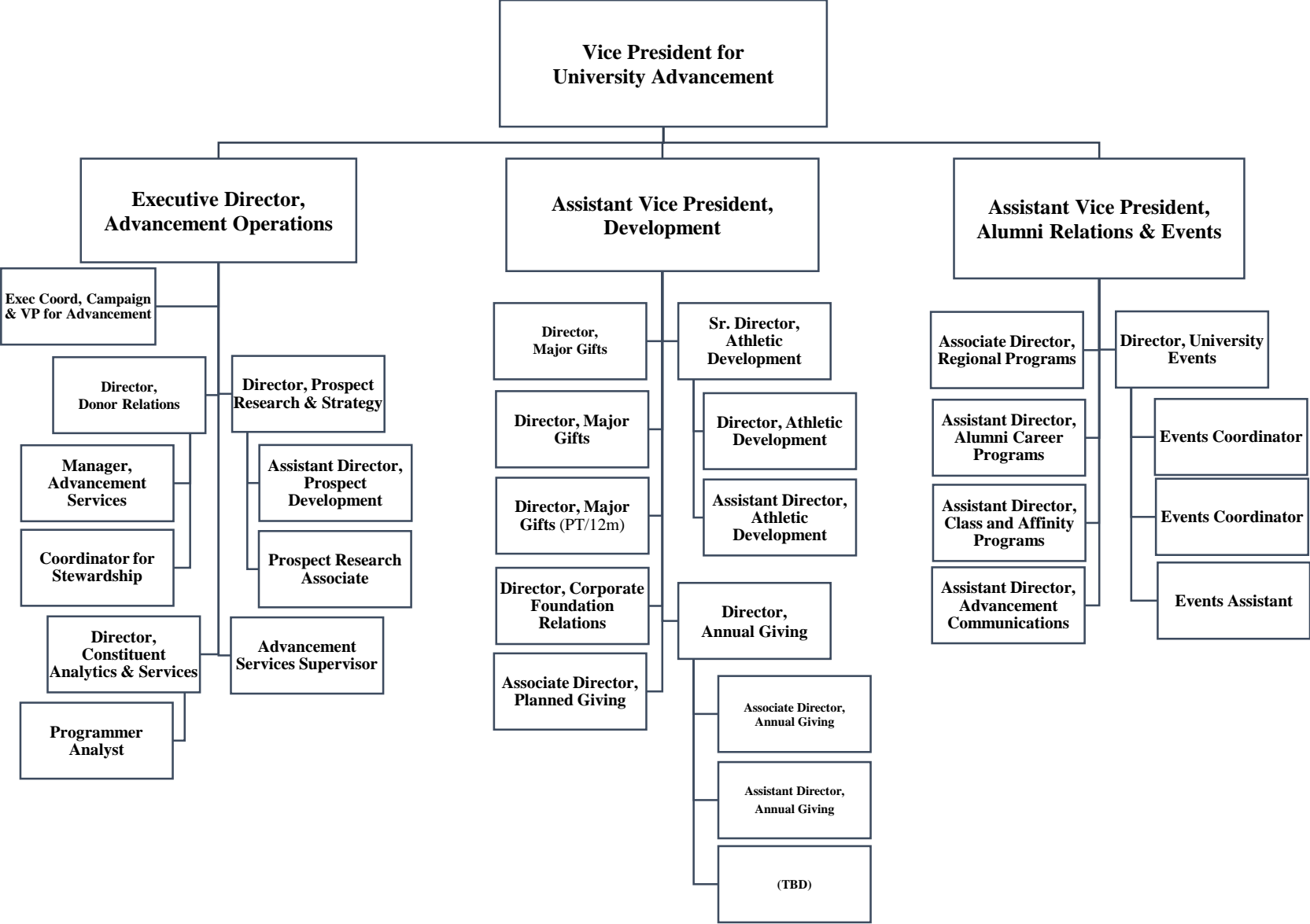


Advancement Division

Organizational Chart

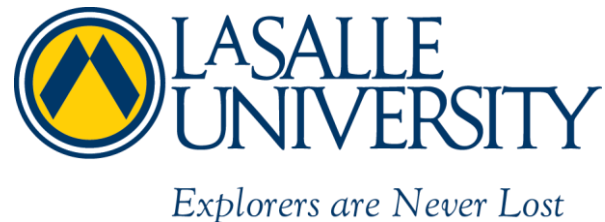


Advancement Division
 August 1, 2019

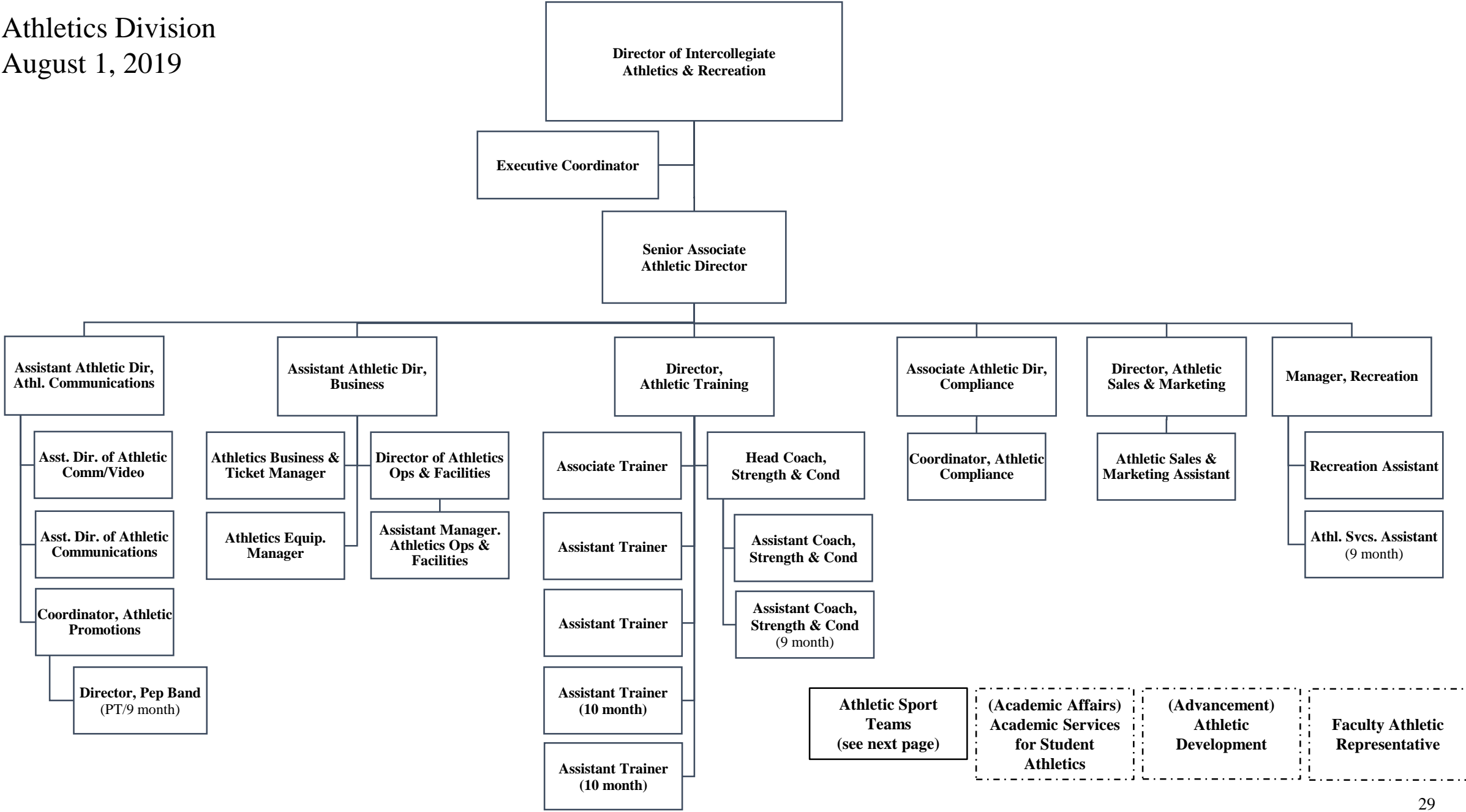


Athletics Division

Organizational Chart



Athletics Division
 August 1, 2019



Athletics Sport Teams – August 1, 2019

Baseball – Men's*

Head Coach (FT, 12 mo.)
Asst. Coach (FT, 12 mo.)
Asst. Coach (FT, 10 mo.)
Asst. Coach (Volunteer)

Basketball – Men's**

Head Coach (FT, 12 mo.)
Asst. Coach (FT, 12 mo.)
Asst. Coach (FT, 12 mo.)
Asst. Coach (FT, 12 mo.)
Coord. of Ops (FT, 12 mo.)
Sp. Asst. to H. Coach (FT, 12 mo.)
Admin Asst III (FT, 12 mo., Shared)

Basketball – Women's**

Head Coach (FT, 12 mo.)
Asst. Coach (FT, 12 mo.)
Asst. Coach (FT, 12 mo.)
Asst. Coach (FT, 12 mo.)
Coord. of Ops (FT, 12 mo.)
Admin Asst III (FT, 12 mo., Shared)

Cheerleading***

Head Coach (PT, 9 mo.)

Crew – Men's and Women's*

Head Coach (FT, 12 mo.)
Asst. Coach (FT, 12 mo.)
Asst. Coach (FT, 10 mo.)

Field Hockey – Women's*

Head Coach (FT, 12 mo.)
Asst. Coach (FT, 12 mo.)
Asst. Coach (FT, 9 mo.)

Golf – Men's*

Head Coach (FT, 10 mo.)
Asst. Coach (Volunteer)

Golf – Women's*

Head Coach (PT, 9 mo.)

Lacrosse – Women's*

Head Coach (FT, 12 mo.)
Asst. Coach (FT, 12 mo.)
Asst. Coach (PT, 10 mo.)

Soccer – Men's*

Head Coach (FT, 12 mo.)
Asst. Coach (FT, 12 mo.)
Asst. Coach (PT, 9 mo.)
Asst. Coach (Volunteer)

Soccer – Women's*

Head Coach (FT, 12 mo.)
Asst. Coach (FT, 12 mo.)
Asst. Coach (FT, 12 mo.)
Asst. Coach (Volunteer)

Softball – Women's*

Head Coach (FT, 12 mo.)
Asst. Coach (FT, 12 mo.)
Asst. Coach (PT, 10 mo.)

Swimming and Diving – Men's and Women's*

Head Coach (FT, 12 mo.)
Asst. Coach (FT, 12 mo.)
Graduate Assistant

Tennis – Men's and Women's*

Head Coach (FT, 10 mo.)
Asst. Coach (PT, 10 mo.)
Graduate Assistant

Track and Cross Country – Men's and Women's*

Head Coach (FT, 12 mo.)
Asst. Coach (FT, 12 mo.)
Asst. Coach (FT, 12 mo.)
Asst. Coach (Volunteer)
Graduate Assistant

Volleyball – Women's*

Head Coach (FT, 12 mo.)
Assoc. Head Coach (FT, 12 mo.)
Asst. Coach (Volunteer)
Graduate Assistant

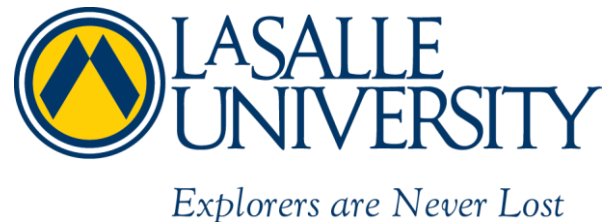
Water Polo – Men's and Women's*

Head Coach (FT, 12 mo.)
Asst. Coach (PT, 9 mo.)
Asst. Coach (PT, 9 mo.)

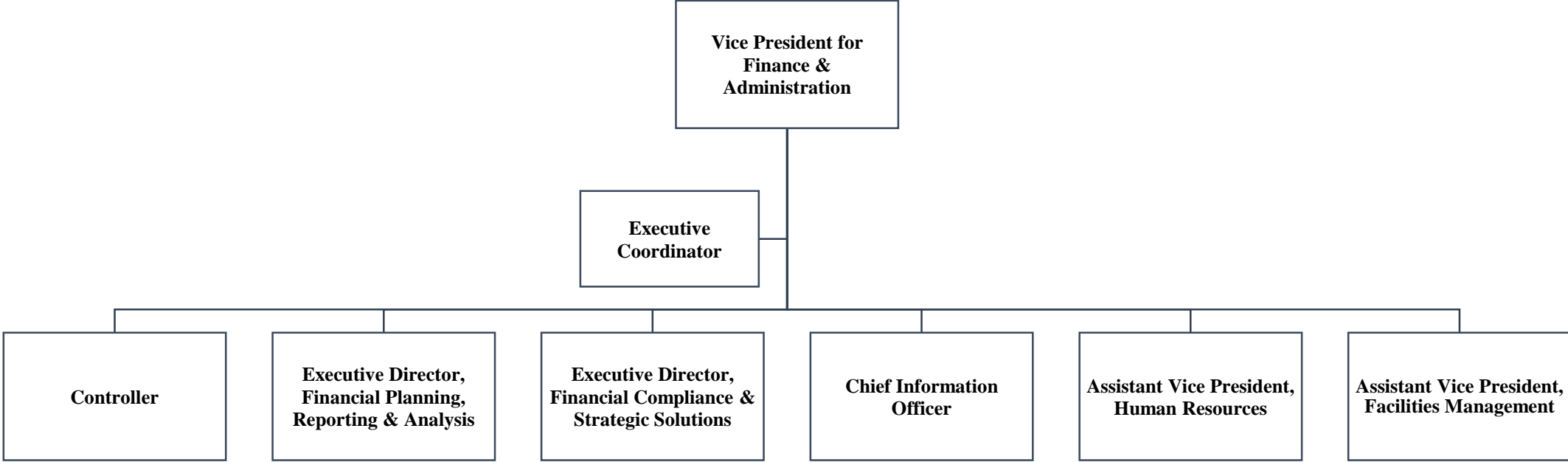
* Reports to Senior Associate Athletic Director
** Reports to the Director of Intercollegiate Athletics & Recreation
*** Reports to Promotions Coordinator

Finance & Administration Division

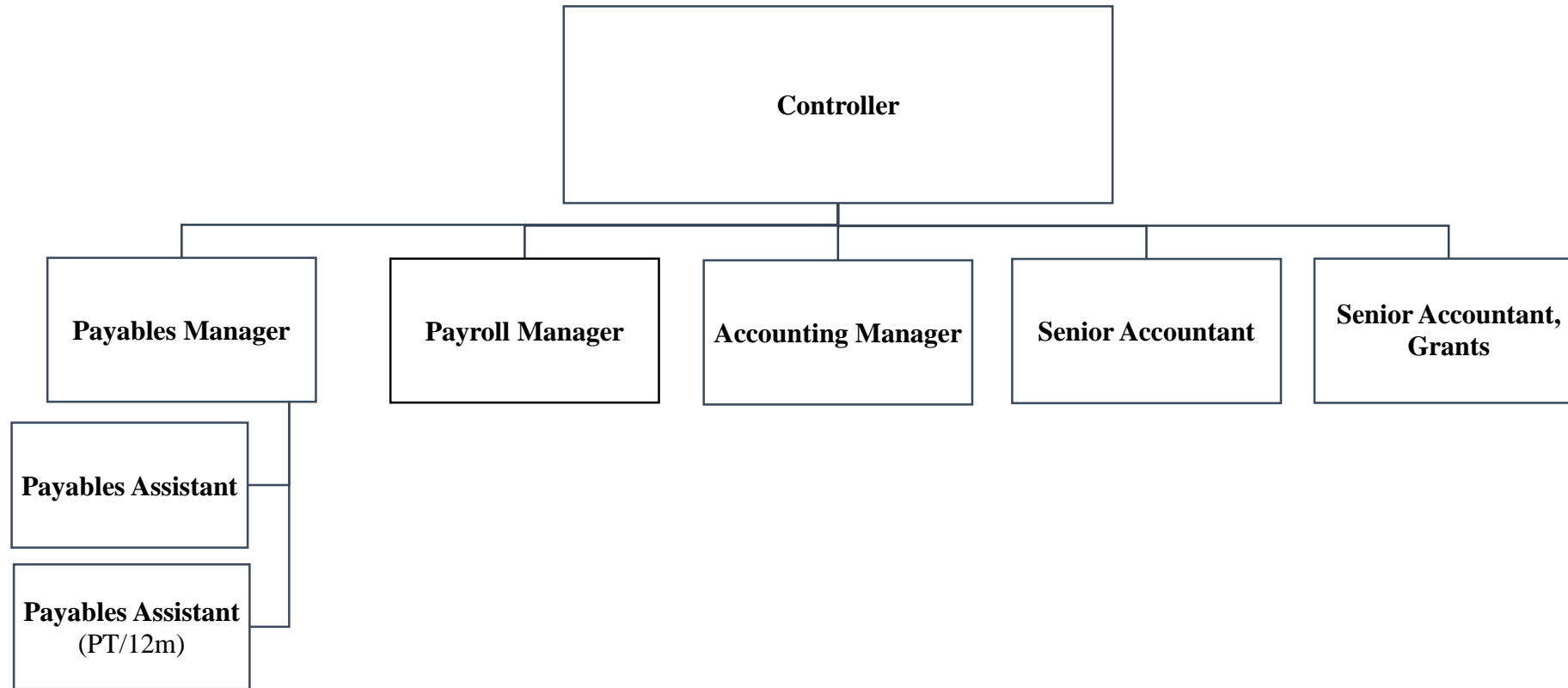
Organizational Chart



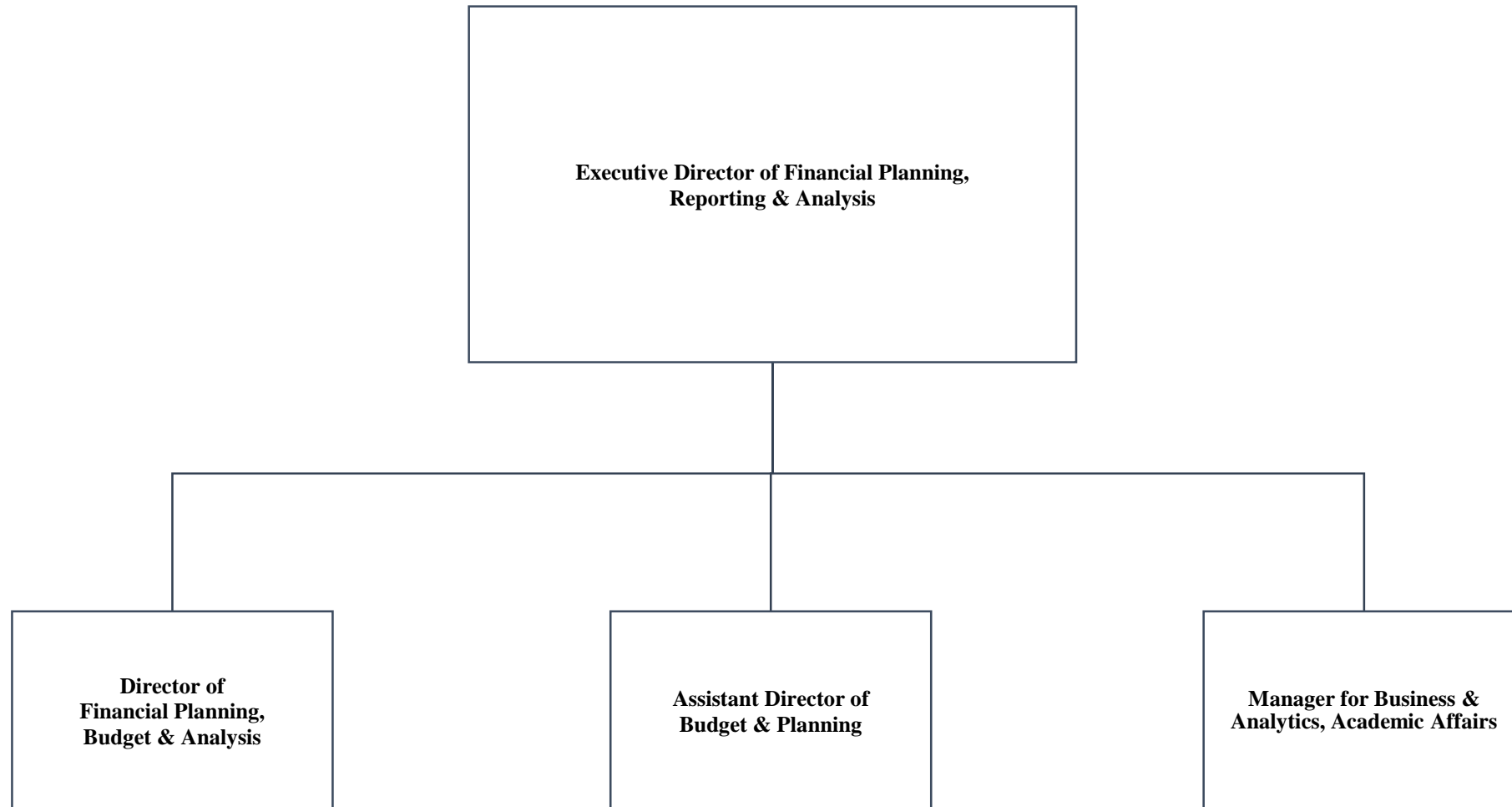
Finance & Administration Division
August 1, 2019



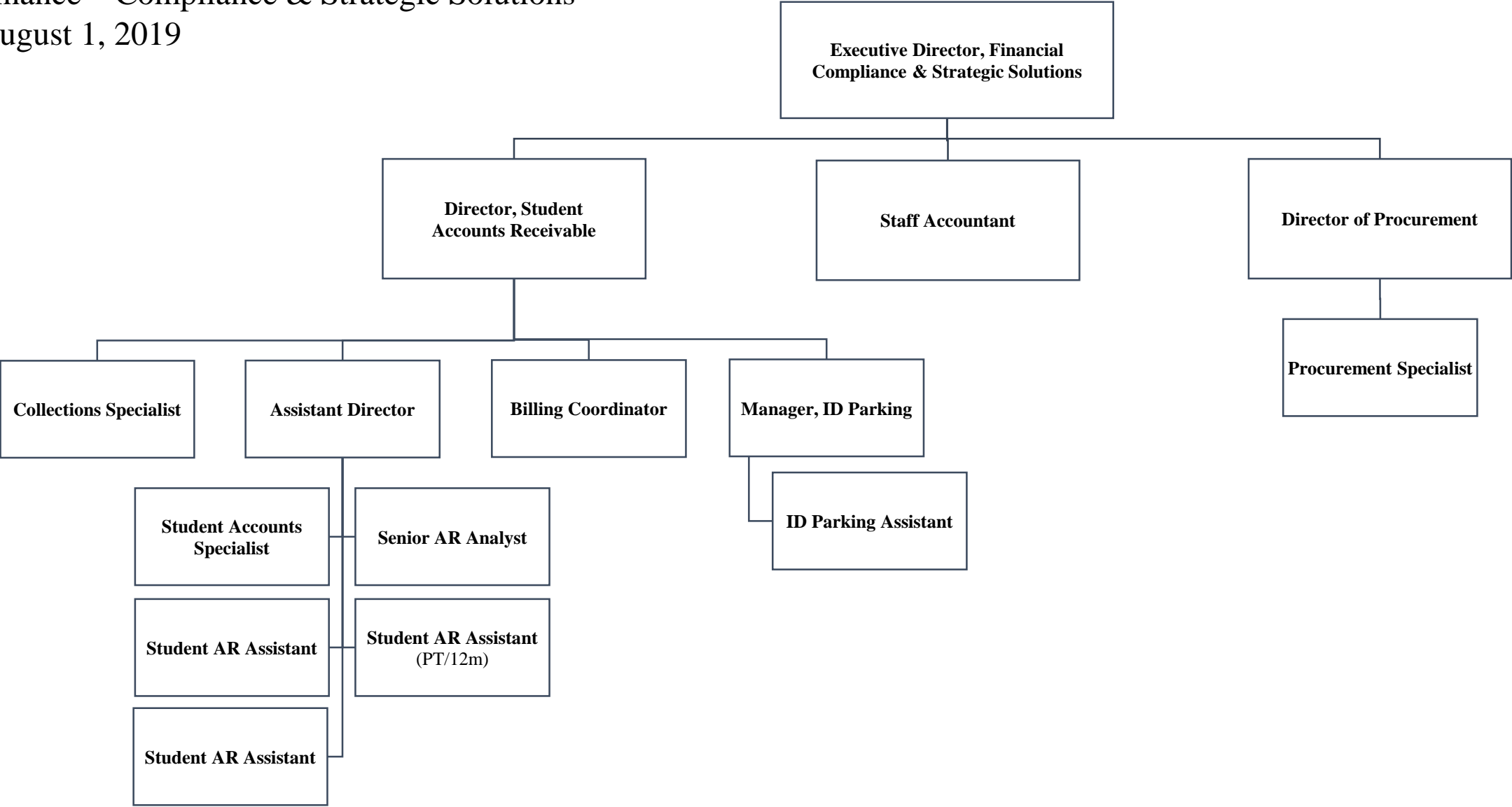
Finance – Accounting
August 1, 2019



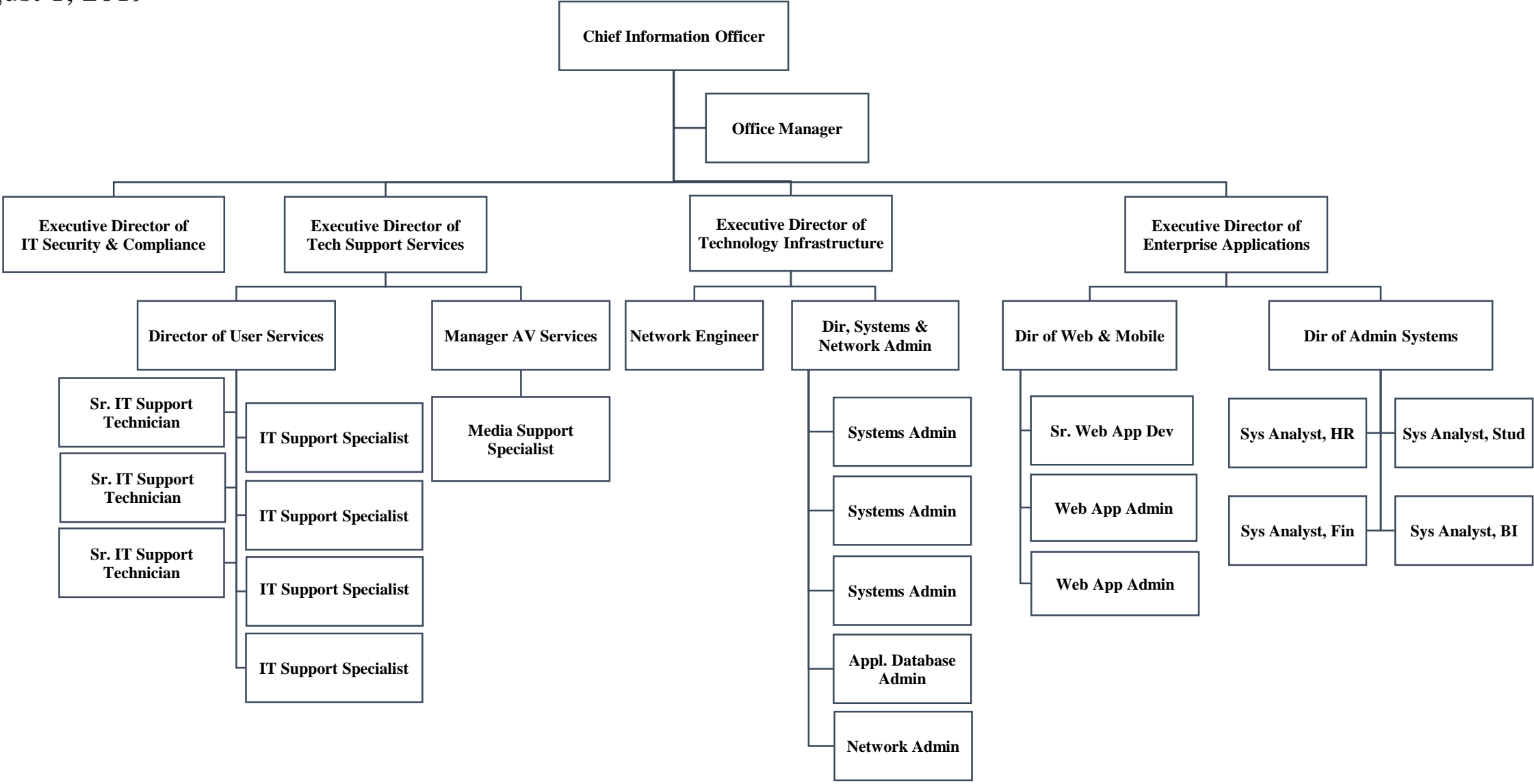
Finance – Budget & Planning
August 1, 2019



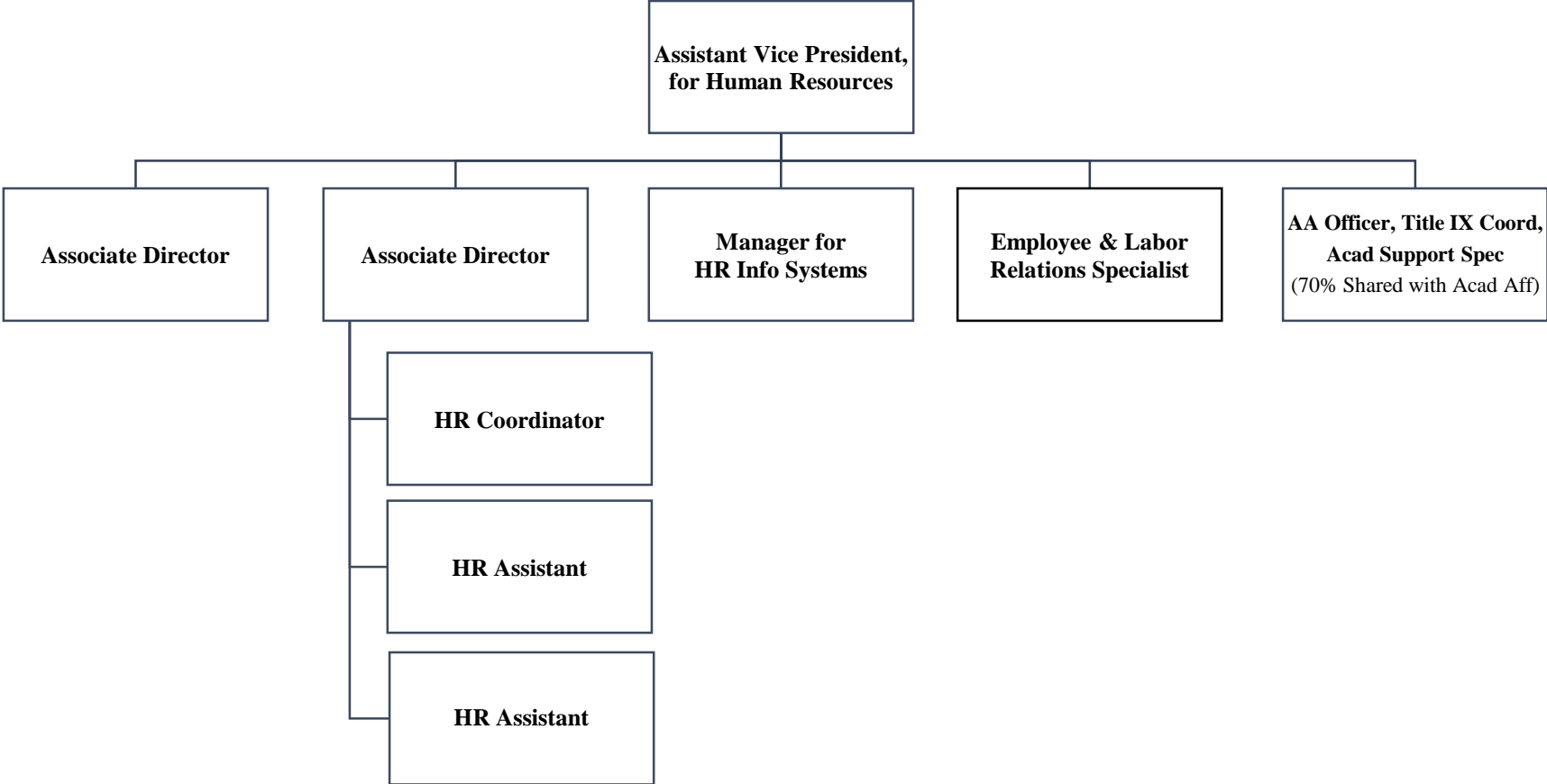
Finance – Compliance & Strategic Solutions
August 1, 2019



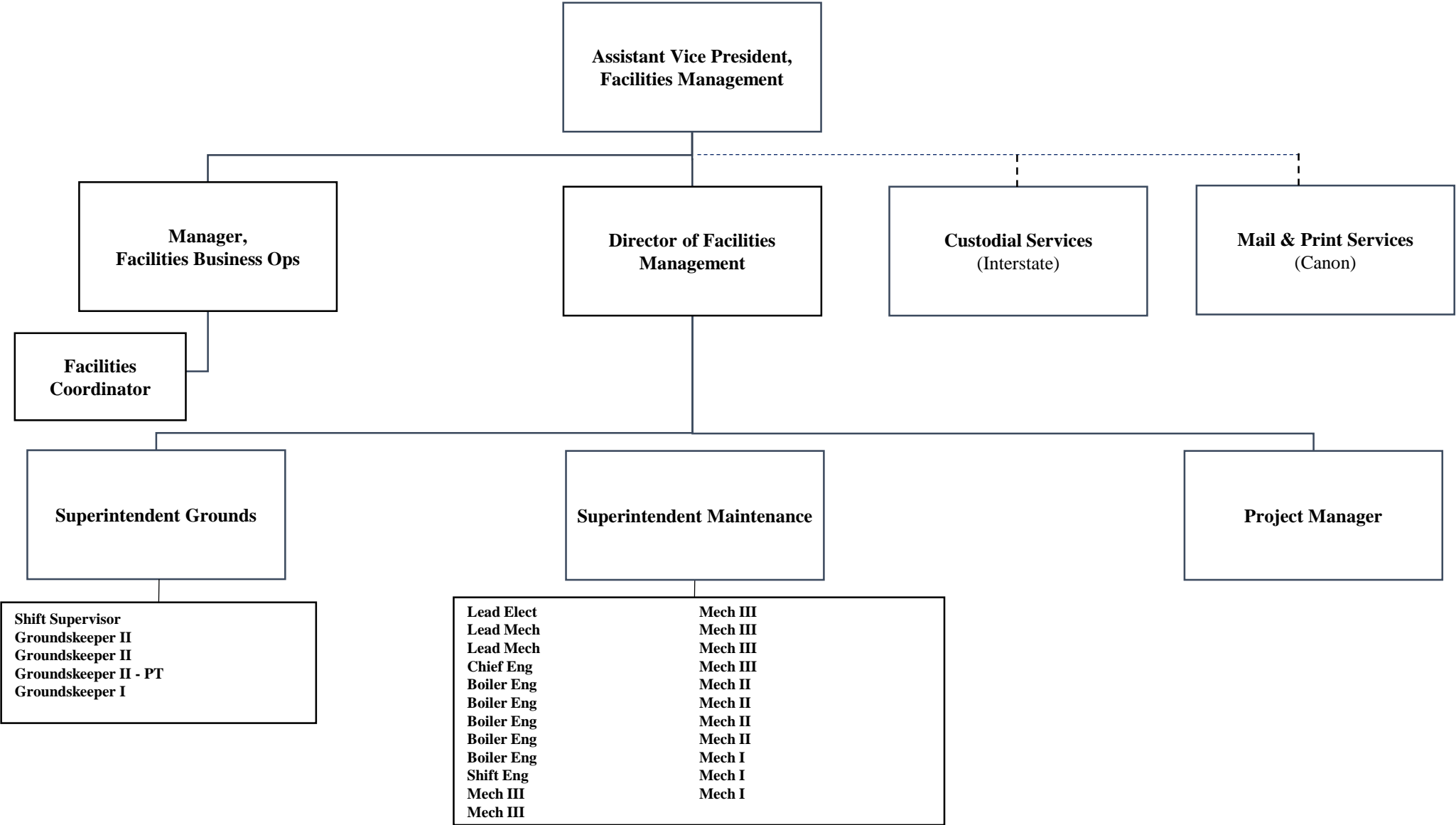
Office of Information Technology
 August 1, 2019



Office of Human Resources
August 1, 2019



Facilities Management
 August 1, 2019

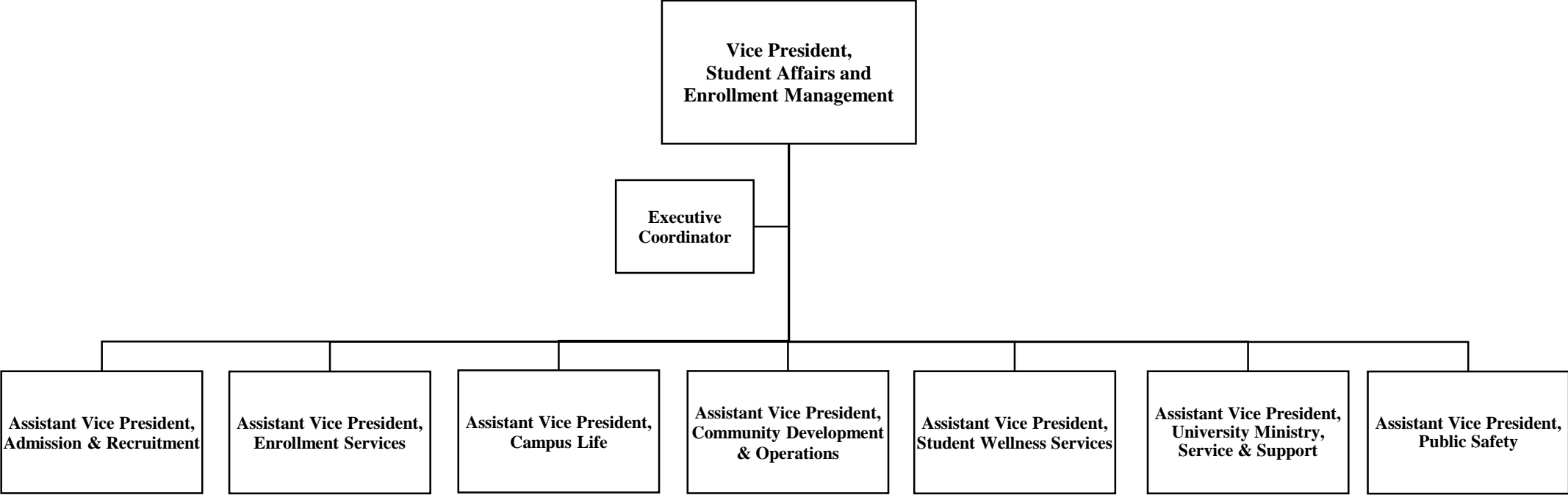


Student Affairs and Enrollment Management Division

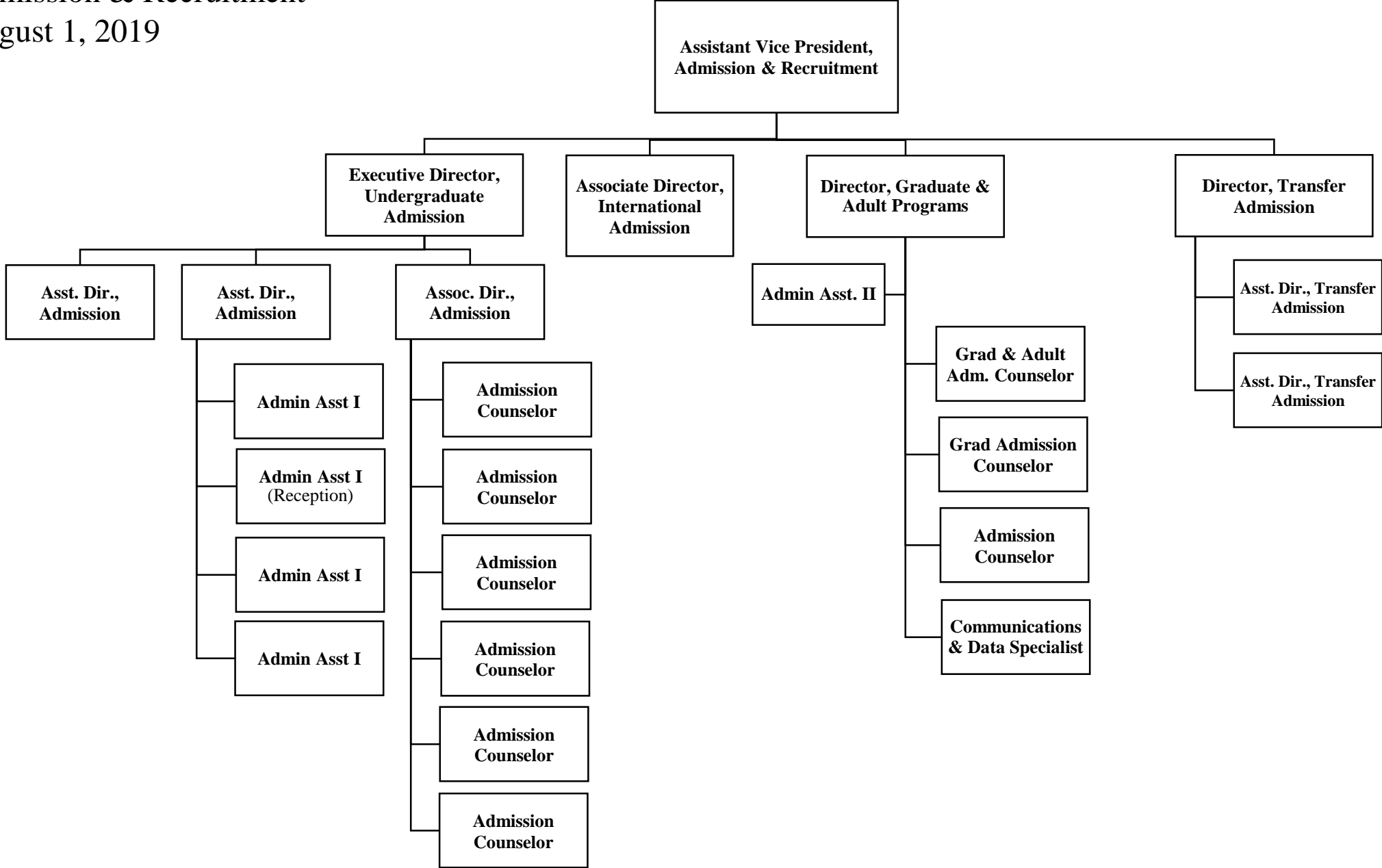
Organization Chart



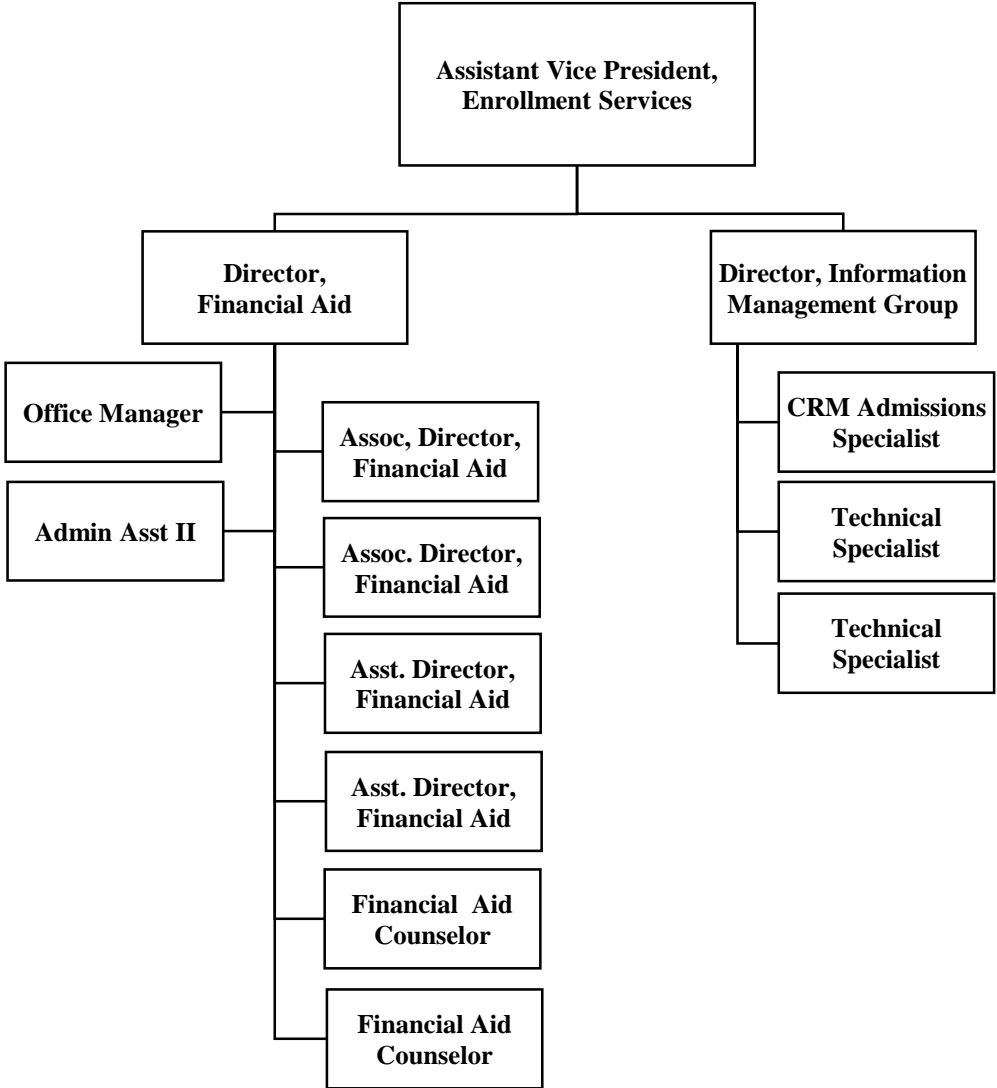
Student Affairs and Enrollment Management Division
August 1, 2019



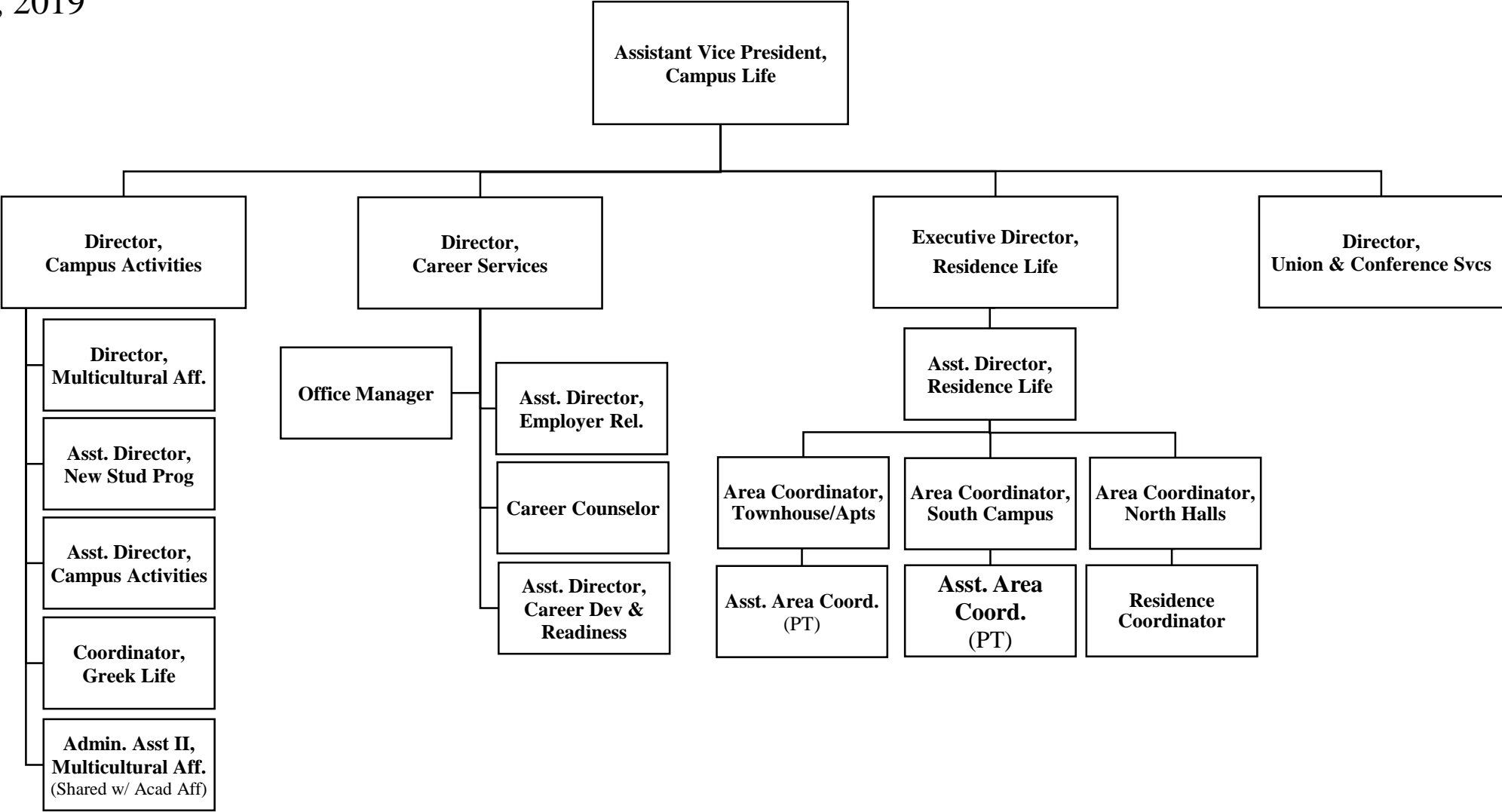
Admission & Recruitment
 August 1, 2019



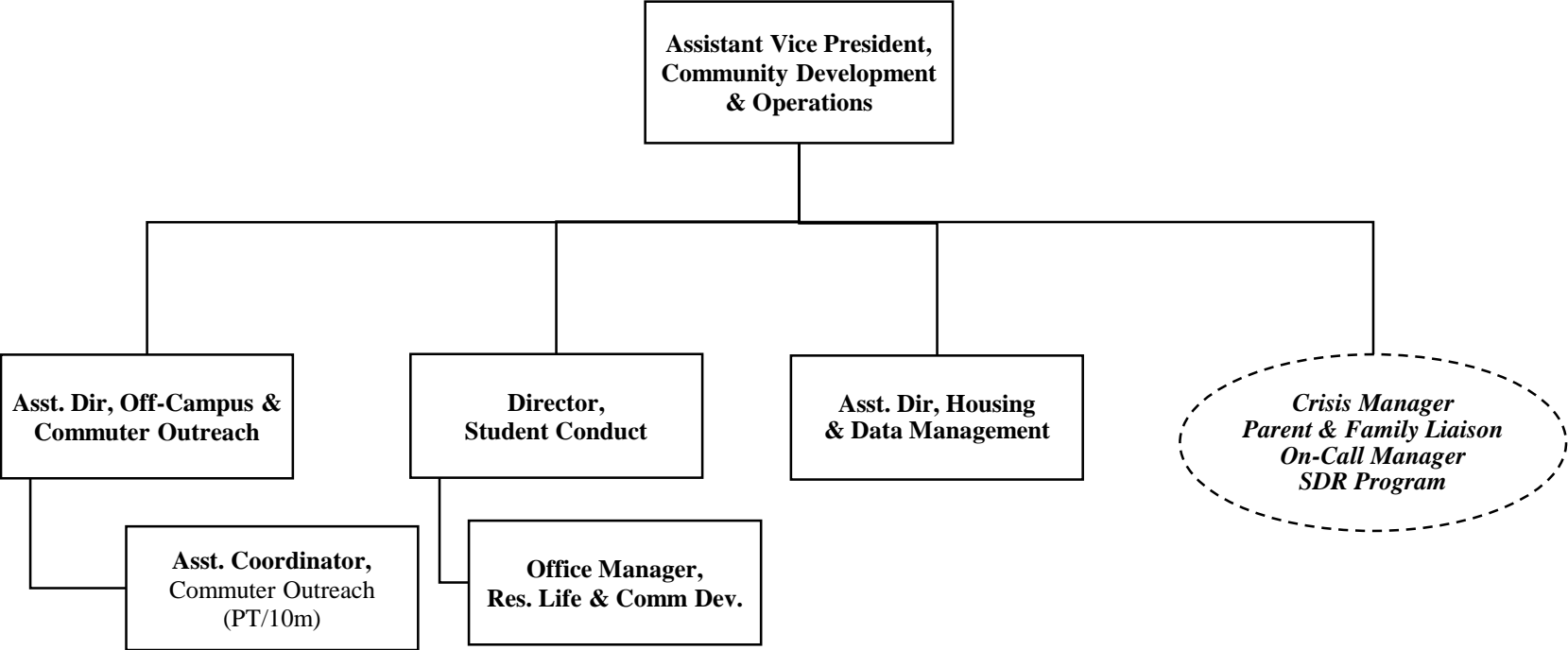
Enrollment Services
August 1, 2019



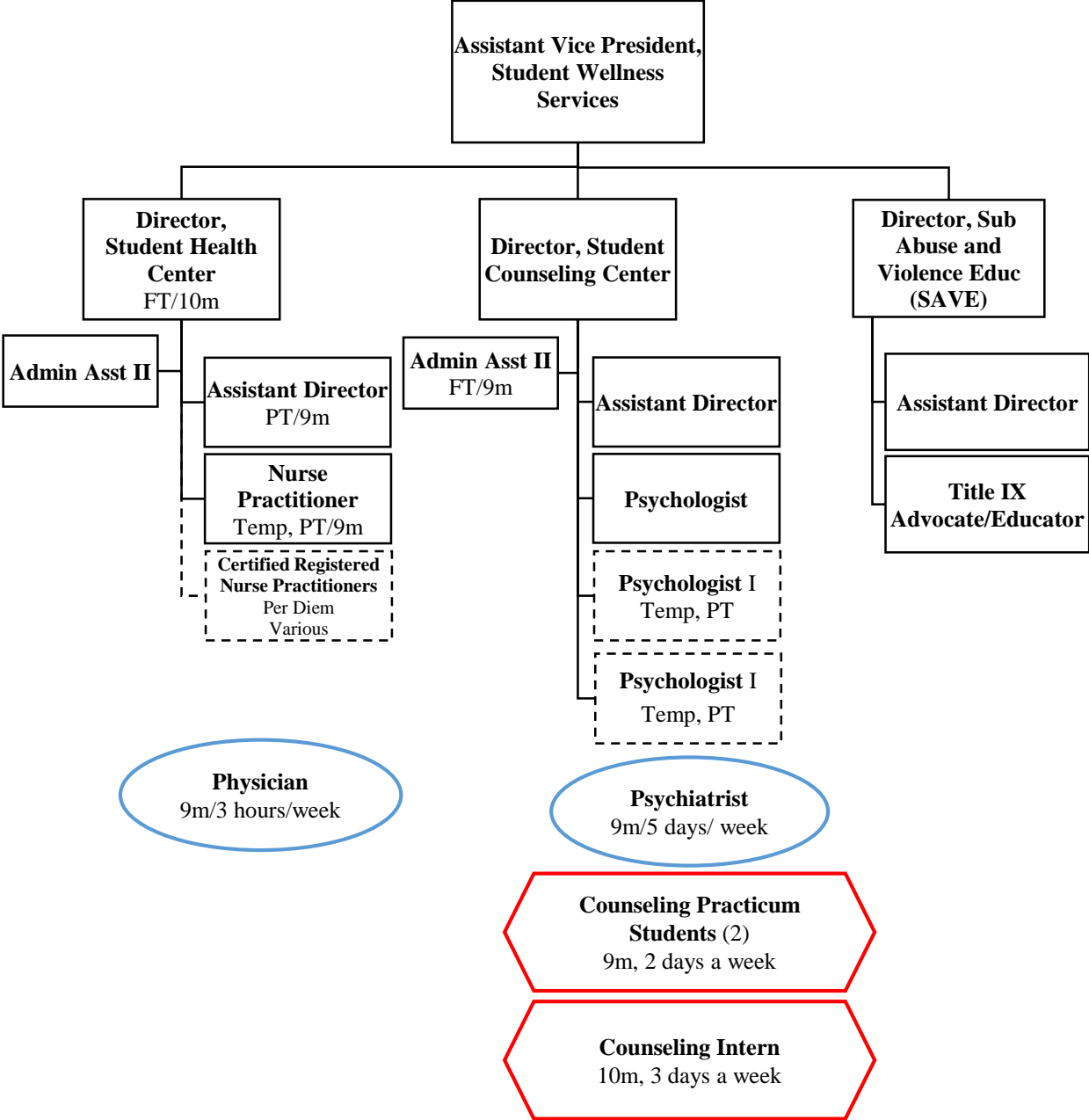
Campus Life
 August 1, 2019



Community Development, Parent Relations & Operations
August 1, 2019



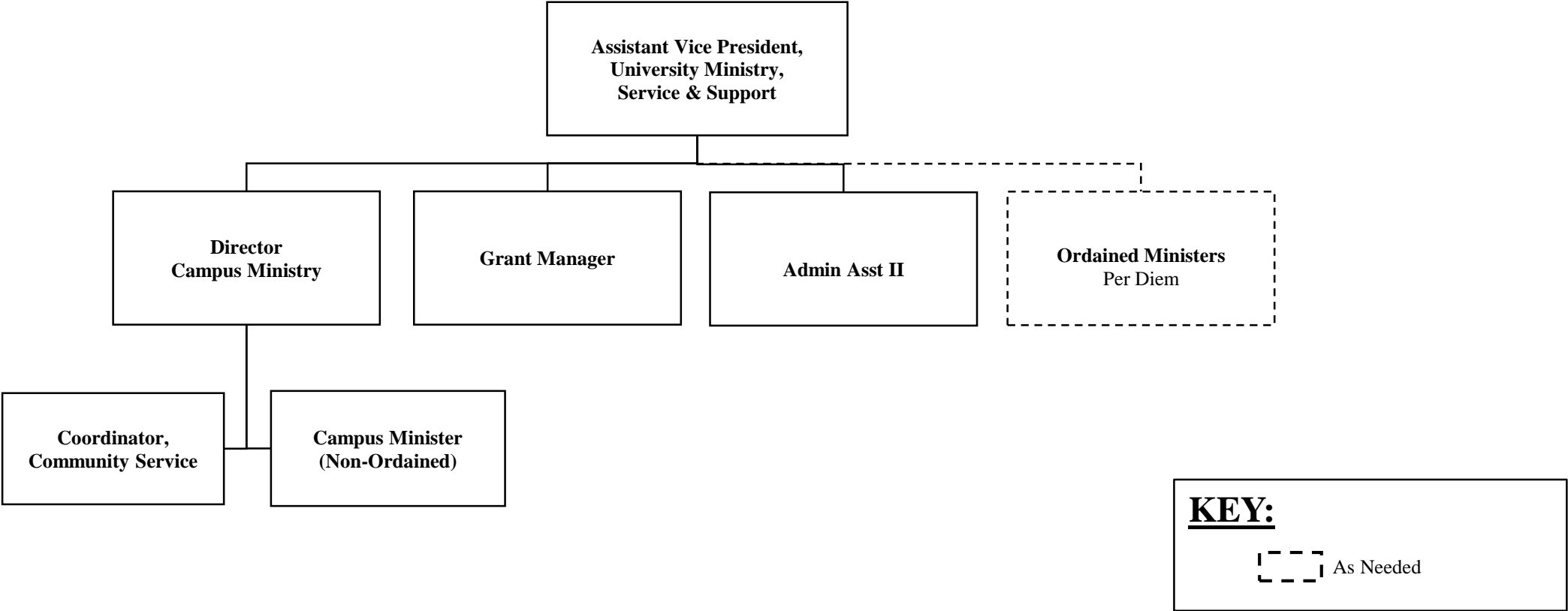
Student Wellness Services
 August 1, 2019



KEY:

- As Needed
- Prof. Services (Contract)
- Unpaid

University Ministry, Service & Support
August 1, 2019



Public Safety
August 1, 2019

